

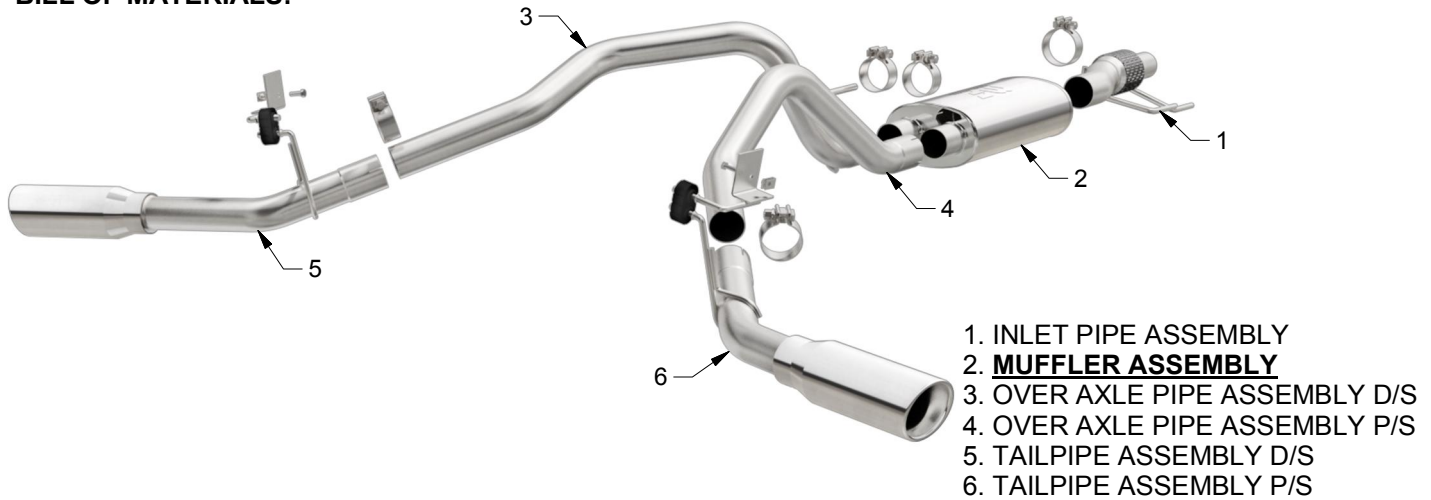


INSTALLATION INSTRUCTIONS



2015 FORD F-150 V6 2.7L | PART NO. 19198

BILL OF MATERIALS:



WEAR SAFETY
GLASSES



READ INSTRUCTIONS
THOROUGHLY BEFORE
INSTALLING PRODUCT

SHOP SUPPLIES:



SPRAY LUBRICANT

To ease removal of existing exhaust components (especially on older vehicles) spray penetrating lubricant on all fasteners and hangers/insulators that will be loosened or removed and let soak before disassembly.

HARDWARE KIT:

1. [4] 2.50" Clamp
2. [1] 3.00" Clamp

MINIMUM REQUIRED TOOLS:



15mm

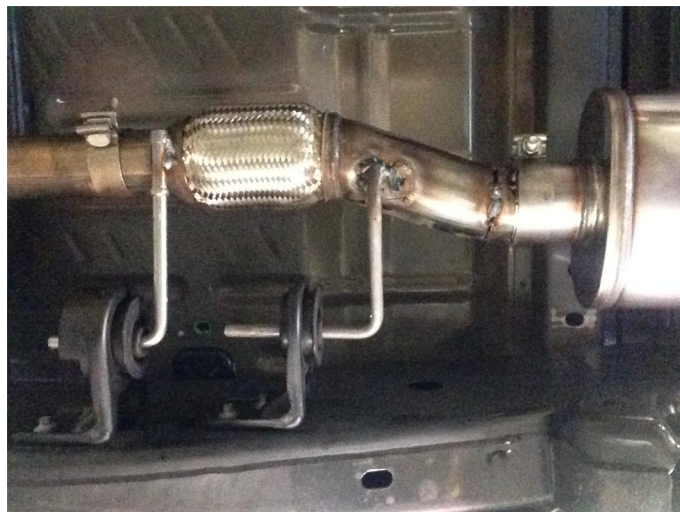


Hanger Tool
(Or Pry Bar)

INSTALLATION INSTRUCTIONS



Step 1. To remove the OEM exhaust system, loosen the clamp attaching the systems inlet pipes to the catalytic converter outlet pipes. Disengage all welded hangers from the OEM rubber insulators. Do not discard the OEM fasteners or damage the rubber insulators as they will be needed to mount your new MAGNAFLOW system.



Step 2. Install the new system by attaching the Inlet Pipe Assembly to the OEM catalytic converter outlet pipes using the existing clamp and hardware. Locate the welded hanger to the rubber insulator. Leave all clamps and fasteners loose for final adjustment of the complete system once installed.



Step 3. Install the Muffler Assembly to the Inlet Pipe Assembly using the supplied 3.00" clamp.



Step 4. Install both the Over Axle Pipes using the supplied 2.50" clamps. Locate the welded hanger to the OEM rubber insulator.

INSTALLATION INSTRUCTIONS



Step 5. To allow for the installation of a dual outlet system on a single outlet vehicle you will have to top mount the supplied Hanger Brackets to existing holes in the factory frame rails using the supplied fasteners (8mm bolt and panel nut) as shown in the photos. Once completed you can now slide the Tailpipe assemblies onto the Over Axle pipes and fasten with the supplied 2.50" clamps and mount the hangers to the installed hanger brackets using the supplied rubber insulators.



Step 6. Once a final position has been chosen for the new exhaust system, evenly tighten all clamps from front to rear using the torque specifications on page one of the instructions. Inspect all fasteners after 25-50 miles of operation and re-tighten if necessary.