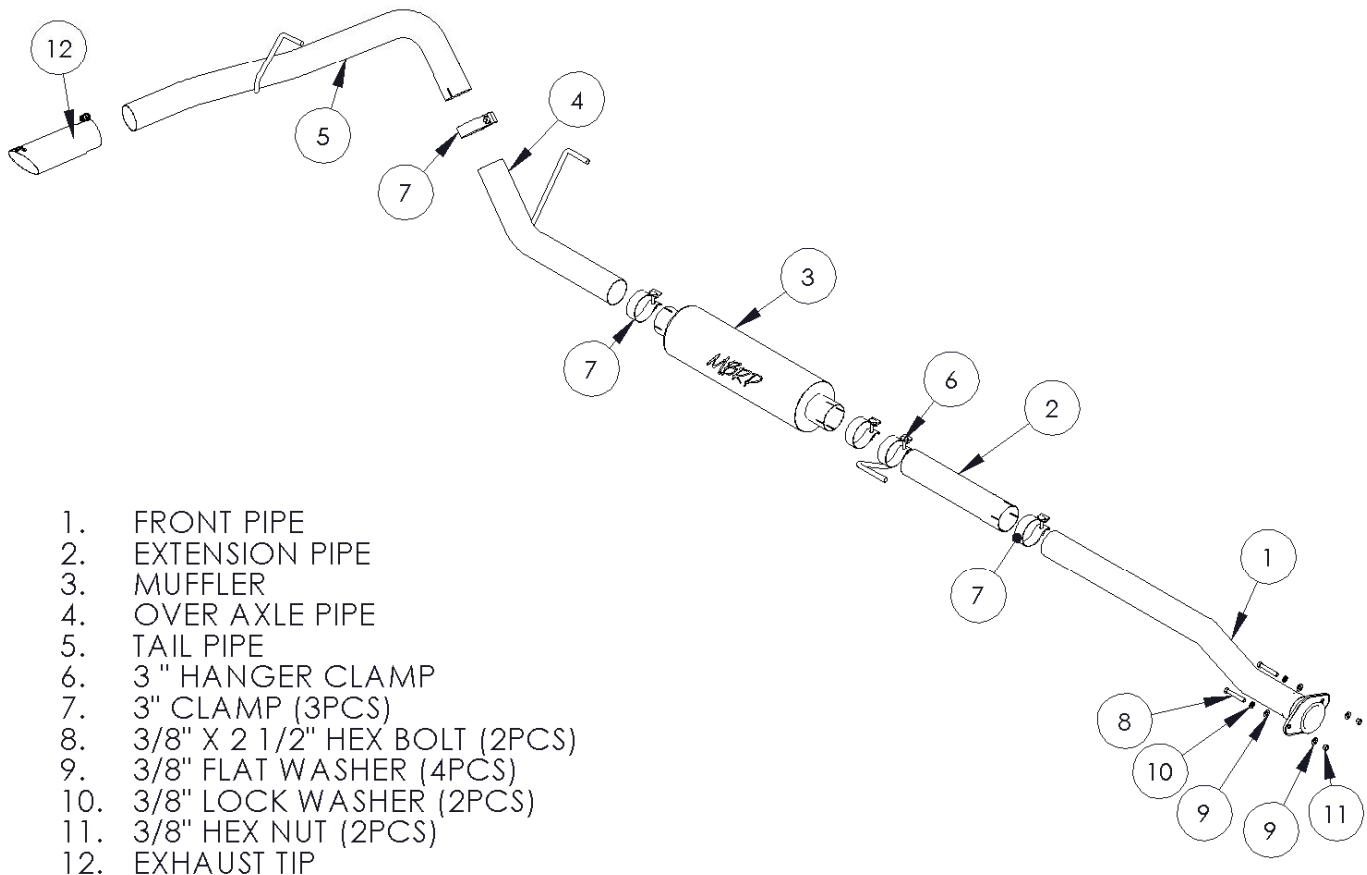


# S5236

2011-13 FORD F150 3.5L V6  
ECOBOOST, RC 6 1/2' AND 8' BOX,  
EC/CC, 6 1/2' BOX AND 5 1/2' BOX, CAT  
BACK, SINGLE SIDE EXIT



1. FRONT PIPE
2. EXTENSION PIPE
3. MUFFLER
4. OVER AXLE PIPE
5. TAIL PIPE
6. 3" HANGER CLAMP
7. 3" CLAMP (3PCS)
8. 3/8" X 2 1/2" HEX BOLT (2PCS)
9. 3/8" FLAT WASHER (4PCS)
10. 3/8" LOCK WASHER (2PCS)
11. 3/8" HEX NUT (2PCS)
12. EXHAUST TIP

NOTE : SADDLE CLAMPS ARE USED IN ALUMINIZED SYSTEMS

## PLEASE READ BEFORE STARTING INSTALLATION

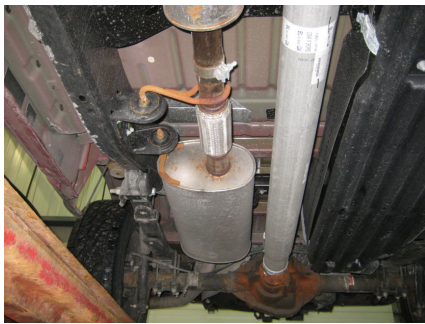
**While MBRP Inc. has made every effort to ensure that all components of this system are of superior quality and properly packaged, it is the installer's responsibility to ensure the following before removal of the factory exhaust:**

- that ALL components shown above are present.
- that ALL mating components fit together.
- that there are no damaged components.
- that the system you have purchased is appropriate for your vehicle year, model and configuration.
- that the system will not interfere with any modifications previously installed or planned.
- that you have read and understand these instructions.

If you have any questions or are uncertain about any aspect of the installation of this system to your vehicle please contact your dealer before commencing installation.



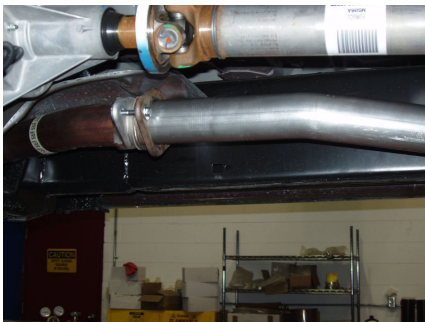
**Figure 1**



**Figure 2**



**Figure 3**



**Figure 4**

**Removal of Stock System:**

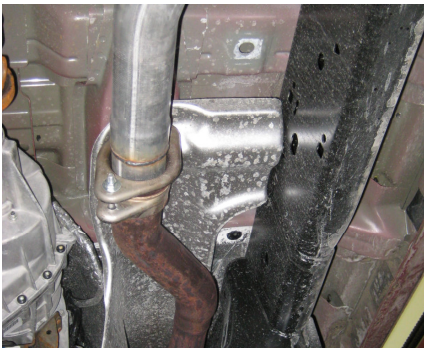
1. Apply a penetrating lubricant liberally to all exhaust fasteners, hangers and rubber insulators.
2. Loosen the flange located behind the “Y” pipe. **Refer to Figure 1.**
3. Loosen the clamp located in front of the muffler. **Refer to Figure 2.**
4. Remove the hangers from the rubber insulators and remove the exhaust from the vehicle. If a hoist or hydraulic lift is not being used the tail pipe may need to be cut to clear the rear axle. **Refer to Figure 3.**

**Installation of MBRP Inc. Performance Exhaust:**

1. Install the **Front Pipe** to the existing flange using the fasteners provided. **Refer to Figure 4.**

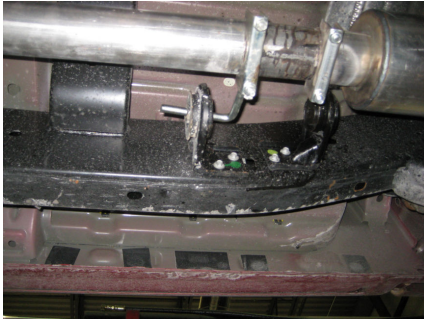
Note: The **Extension Pipe** will not be required on some models.

Model	Bed Length	Wheelbase	Extension Pipe Required	Shortening Front Pipe Required
Regular Cab	6.5'	145"	No	19"
Regular Cab	8'	145"	No	No
SuperCab	6.5'	145"	No	No
SuperCab	5.5'	133"	No	11"
SuperCrew	6.5'	157"	Yes	No
SuperCrew	5.5'	145"	No	No



**Figure 5**

2. Slide a **3" Clamp** over the **Front Pipe** and install the **Extension Pipe** onto the **Front Pipe**. Install the **3" Hanger Clamp** loosely to the **Extension Pipe** (or **Front Pipe** if the **Extension Pipe** is not required) and place the hanger into the foremost existing rubber insulator. **Refer to Figure 5.**



**Figure 6**

3. Slide a **3" Clamp** over the **Extension Pipe** or **Front Pipe** as required to attach the **Muffler**. **Refer to Figure 6.**

4. Loosely install the **Over Axle Pipe** connecting it to the **Muffler** outlet using a **3" Clamp**. Install the hanger into the rubber insulator located above the **Over Axle Pipe**. **Refer to Figure 7.**



**Figure 7**

5. Attach the expanded end of the **Tail Pipe** and connect it to the **Over Axle Pipe** using a **3" Clamp**. Slide the **Tail Pipe** hanger into the factory rubber insulator. **Refer to Figure 8.**

6. Install and adjust the **Exhaust Tip** to suit. Using a 17mm wrench tighten the lock bolt on the **Exhaust Tip**. **Refer to Figure 9.**

7. Align the exhaust as required. Starting at the front of the exhaust tighten all clamps and connections.



**Figure 8**

8. Check along the whole length of the exhaust system to ensure that there is adequate clearance around the spare tire, fuel and brake lines or any wiring. If any interference is detected relocate or adjust.



**Figure 9**



**Congratulations!** You are ready to begin experiencing the improved power, sound and driving excitement of your MBRP Inc. performance exhaust system. We know you will enjoy your purchase.