

Magnaflow MF Series Cat-Back Exhaust
Dual Side Exit - Before Rear Tire p/n: 19054
2015-2017 F150 Extended Cab

Time Necessary: Approximately 1 hour

Please Note: I ran into an issue with my install. This kit is not designed to fit a Crew Cab with the 6.5ft bed. I had to add an additional 12 inches of exhaust pipe to make this work. It is possible to make this work on a truck like mine, but it will require more time and pipe that is not included in the kit.

Parts Included:

1. HANGER BRACKET
2. [2] U-TYPE PANEL NUTS
3. [2] M8-1.25 X 25mm BOLTS
4. [2] M10-1.50 NUTS
5. [2] M10 WASHERS
6. 3.00" TORCA CLAMP
7. HANGER RUBBER
8. TAILPIPE MUFFLER ASSEMBLY
9. INLET PIPE ASSEMBLY

Tools Required:

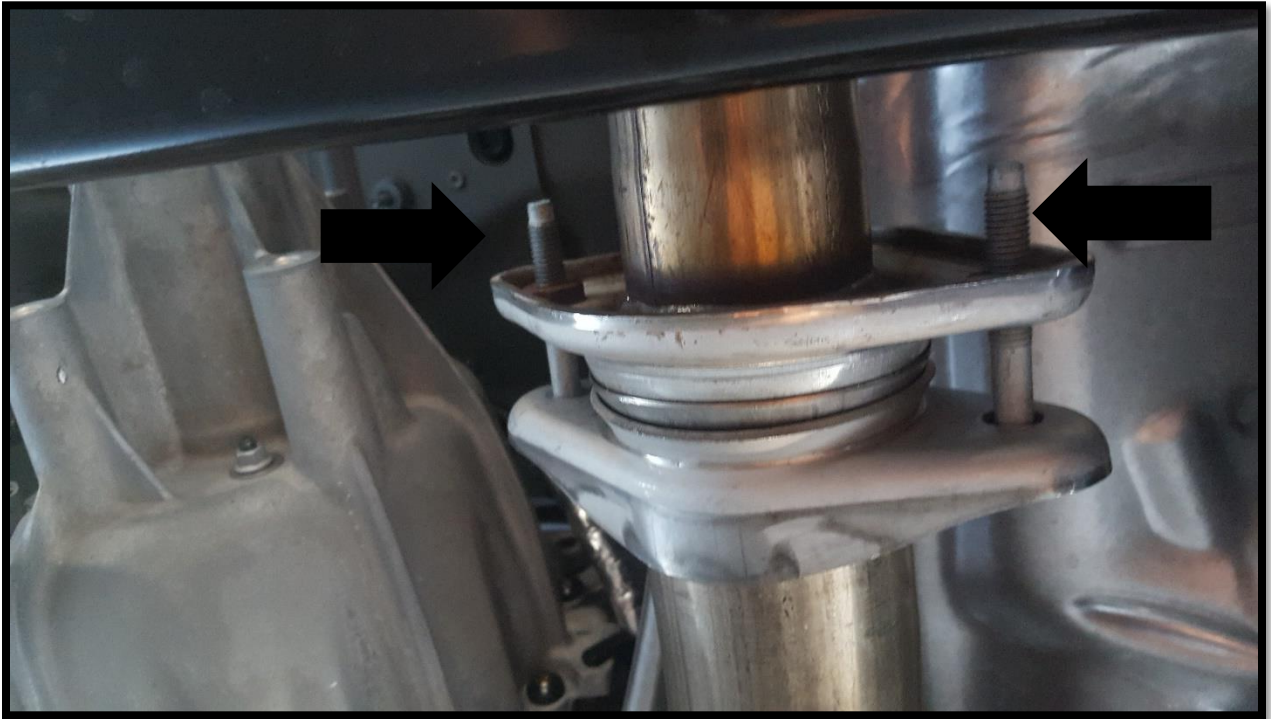
1. Automotive Lift or Jack and Jack Stands
2. 3/8 Ratchet
3. 15mm socket
4. 13mm socket
5. 10mm socket
6. Exhaust hanger tool or pry bar
7. WD40 or some type of spray lubricant for hangers



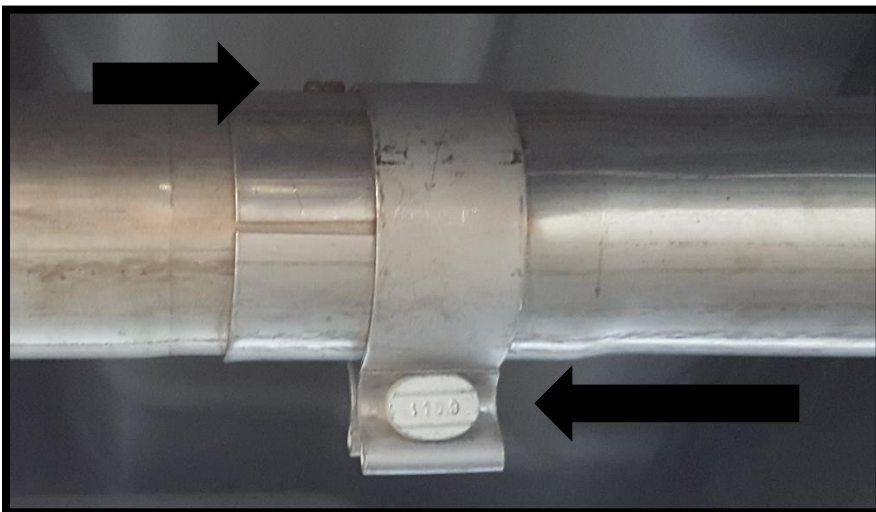
Factory Exhaust Removal: (*Please Note*) Only work on exhaust when vehicle exhaust and components are nice and cool. Never work on a hot exhaust system.

I recommend to spray all the rubber bushings on the exhaust hangers to make removal easier when you get to that step.

Step 1: Once your vehicle is safely in the air, start out by removing the two 13mm bolts from the exhaust flange in front of the resonator.

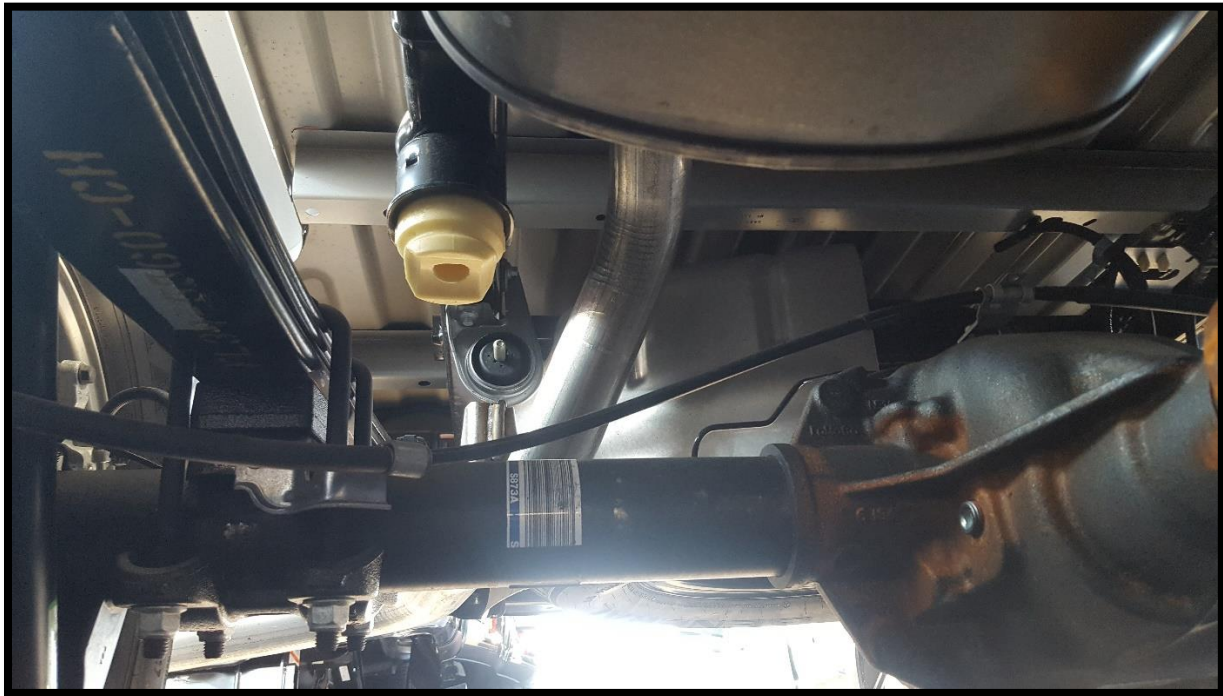


Step 2: Next loosen the 15mm nut on the clamp where the muffler and tailpipe assembly meets the resonator pipe. There is a tab that locks the exhaust together. You must twist the resonator pipe to unlock it before sliding the pipe out.



Step 3: Remove the resonator and pipe first since there is no hanger on this it will make the install a little easier.

Step 4: Next you can remove the rear muffler and tailpipe assembly. This piece is very large and heavy when doing this by yourself. If you have a second person just for this part it can really help. There are four hangers that hold this system up. Start out at the front of the muffler. You can slide this hanger off by hand. Then use a prybar or and exhaust hanger tool to remove the rear system all in one piece and take it over the front of the axel. (remember this piece is heavy)

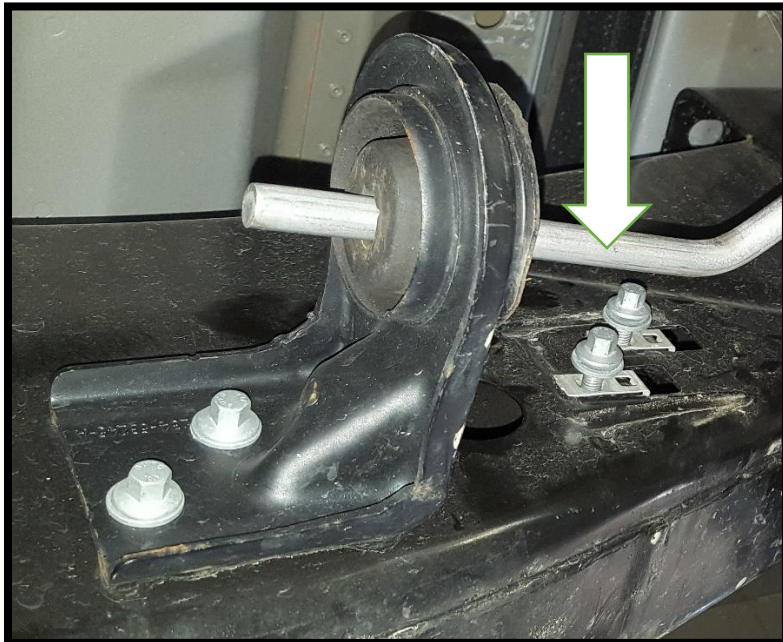


Install New Exhaust System

Step 1: Install the inlet pipe assembly onto the flange using the factory bolts and the two supplied M10-1.50 Nuts. Do not tighten these yet you want to leave these loose.



Step 2: Locate and remove the second rubber exhaust hanger and bushing on the inside of the trucks frame by remove the two 10mm bolts shown in the picture. If you have the 5.0 engine you will need to leave this in place.



Step 3: Locate the two square holes with small round holes beside each of them on the outside passenger side of the trucks frame. Install one of the U-Type panel nuts that were included in the kit in each of these holes as shown in the picture.



Step 4: Loosely install the supplied hanger bracket using the two M8-1.25 X 25mm bolts supplied in the kit where you just installed the panel nuts in the frame.



Step 5: Slip the 3" TORCA clamp over the muffler assembly. Install the muffler assembly by sliding the 1st welded hanger onto the factory exhaust hanger with rubber insulator located inside frame. Loosely secure the front of the muffler assembly pipe into the rear of the inlet pipe assembly using the TORCA clamp. Attach the hanger bracket assembly on the outside passenger frame to the welded hanger on the mufflers tailpipes using the supplied rubber hanger insulator.



Step 6: Once you position your exhaust in the exact location that you like, start tightening all your bolts and clamps starting at the front of the exhaust with the flange making sure your evenly tighten this. Then tighten the TORCA clamp where the muffler assembly and the inlet pipe meets together. Lastly you will need to tighten the two bolts on the outside of the frame holding the tailpipes up.





Step 7: Start your truck up and enjoy the amazing sound. Try to abide by all your local traffic laws while still enjoying the sound of your new exhaust system.

Please Note: It is recommended that you re-inspect and tighten all your bolts and clamps after about 50 miles of use.

Installation Instructions written by AmericanMuscle customer Mike Zyski 1/04/2016