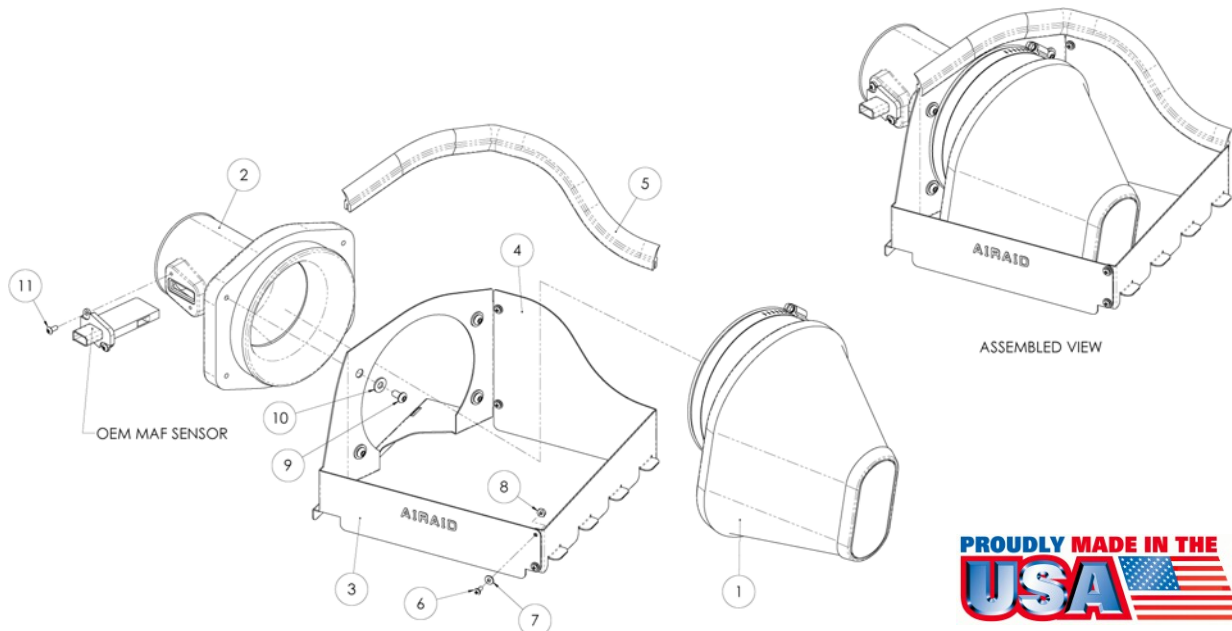




INTAKE SYSTEMS

Installation Instructions Part Number 400-226 2009-10 Ford F-150 All 4.6L, 5.4L 2008-10 Ford F-250/F-350 Superduty 5.4L V-8 & 6.8L V-10

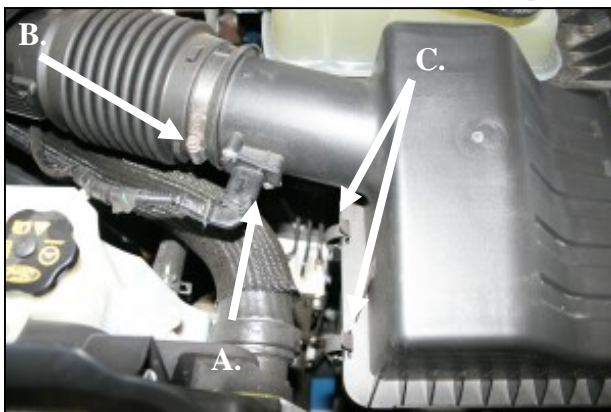


Packing List:

#1	720-473	Airaid Premium Filter	1
#2	KIT203A	MAF Adapter Tube	1
#3	KIT226FPC	Front Panel	1
#4	KIT226RPC	Rear Panel	1
#5	KITWSTRIP02	Weather Strip 16 1/2"	1
	KIT226HP	Hardware & Instructions	1
#6	KIT6C31MXPPZ	6-32x5/16" Screw	4
#7	KIT6NWSAPZ	#6 Flat Washer	4
#8	KIT6CNKEPZ	6-32 Keps Nut	4
#9	KIT15DHC3050	1/4-20 Button Head Bolt	4
#10	KIT09FWZ019	1/4" Flat Washer	4
#11	KIT15BHC3038	8-32x3/8" Button Head Screw	2
	KITBIT#T20	#20 Torx Security Bit	1

Tools Required For Installation:

3/32", 5/32" Allen Wrenches
5/16", 1/4" Sockets
Ratchet & Extension
Phillips Screwdriver
#20 Torx Security Bit (Provided)



1. Disconnect the negative battery cable!

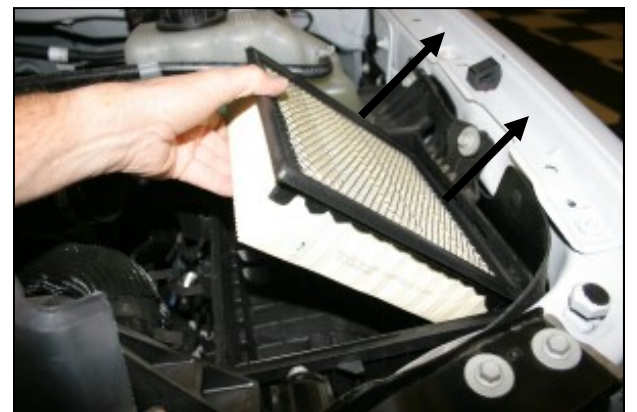
A.) Using the provided #20 Torx Bit remove two screws and the Mass Air Flow (MAF) sensor from the factory intake tube. There is no need to disconnect the wiring harness.

B.) Loosen the factory hose clamp.

C.) Unlatch 3 clips that secure the airbox lid to the base.



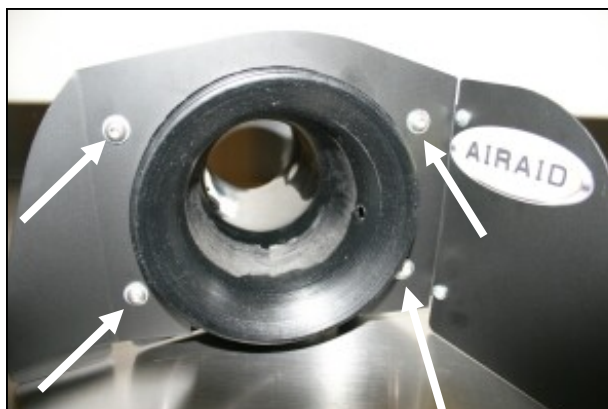
2. Remove the factory airbox lid from the vehicle by sliding the flexible tube off of the airbox lid neck, and then rotate the lid up and out of the base.



3. Remove the factory air filter from the airbox base.



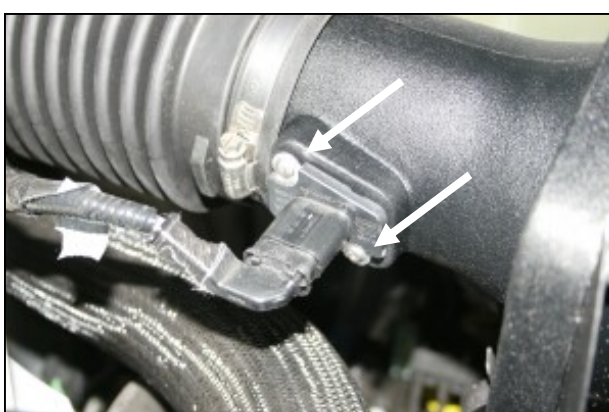
4. Assemble the two Quick Fit panels (#3 & #4) as shown using four 6-32 screws (#6) flat washers (#7) and keps nuts (#8).



5. Install the MAF Adapter Tube (#2) into the Quick Fit Panel as shown using four 1/4-20 button head bolts (#9) and flat washers (#10). Make sure the slot for the MAF sensor is on the left side when looking from this view.



6. Install the Quick Fit Assembly onto the top of the factory airbox base sliding the four tabs on the panel into the slots on the base and then latching the three factory latches. Slide the factory intake tube over the MAF tube and tighten the factory hose clamp as shown.



7. Reinstall the MAF sensor into the Airaid Adapter Tube using two 8-32 x 3/8" button head screws (#11).
Do Not Use The Factory Screws !



8. Install the Airaid Premium Filter (#1) onto the adapter tube and tighten the hose clamp. Next install the weather strip (#5) onto the top of the Quick Fit panels as shown.

9. Double check your work!

Make sure there is no foreign material in the intake path. Make sure all clamps, hoses, bolts, and screws are tight. intake path. Make sure all clamps, hoses, bolts, and screws are tight. Periodically check the tightness of all hose clamps.

10. Re-connect the negative battery cable!

Before!



After!



Thank you for purchasing the Airaid Intake System. Contact Airaid @ (800) 498-6951 8:00 AM - 5:00 PM MST weekdays for questions regarding fit or instructions that are not clear to you. Your Airaid Intake System was carefully inspected and packaged. Check that no parts are missing, or were damaged during shipping. If any parts are missing, contact Airaid. The air filter element is protected from direct exposure to water and debris; care should be taken not to drive through deep water. WATER INGESTION IS THE DRIVERS RESPONSIBILITY! The air filter is reusable and should be cleaned using the Airaid Filter Tune-Up Kit periodically.

Don't Forget Your AIRAID Filter Tune-Up Kit!



P/N 790-551 Aerosol Spray
P/N 790-550 Squeeze Spray

Rev: 01/07/10