

**SEAT
PROTECTOR**

WeatherTech®

Installation Instructions

Thank you for purchasing the WeatherTech® Seat Protector. Please read this installation guide to thoroughly familiarize yourself with the steps to install the Seat Protector into your vehicle.

Helpful Hint:

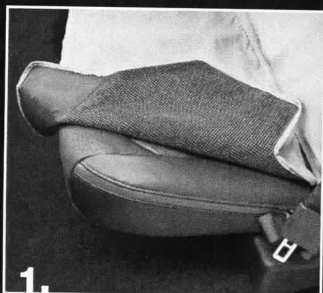
Move front row seats forward for extra room during installation.

Note:

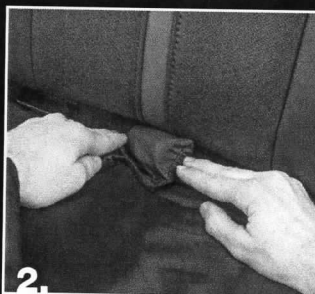
If vehicle is equipped with center seatbelt, it will not be accessible.

Note:

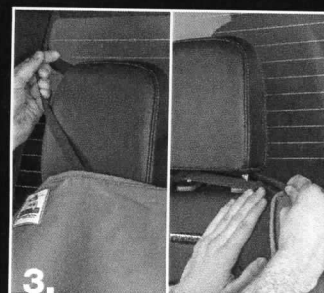
When installing "Semi-Custom" products, additional adjustments may be necessary to achieve desired fit.



1. Unroll cover. Place seat bottom portion grippy side down and fold seat back portion over onto bottom portion. Ensure the half with straps is on top.



2. Insert foam attachments between seat cushion and seat back.



3. Unfold top half upwards to cover the seat back and secure the elastic straps around the headrests. (Skip to Step 7 if there are no child safety latches present)

CLEANING INSTRUCTIONS:

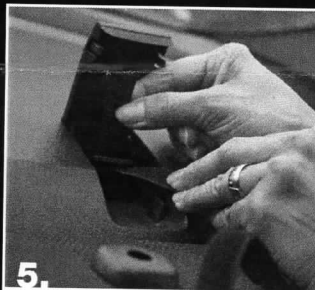
1. Using a large commercial washer without agitator, wash the Seat Protector using 1/4 cup of a gentle detergent, without bleach, in cold water. Do not pour detergent directly onto the Seat Protector.

2. Rinse the Seat Protector twice (2X) to remove all of the detergent.

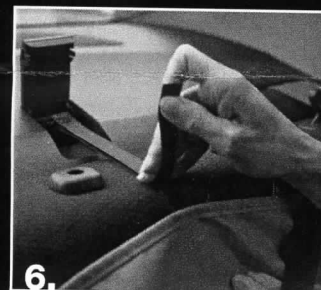
3. Hang and allow to air dry.



4. If vehicle is equipped with child safety latches, separate the hook and loop attachments at the top of the cover.



5. Thread attachments through latch behind each headrest.



6. Secure hook and loop attachments once threaded through.

Spot-cleaning:

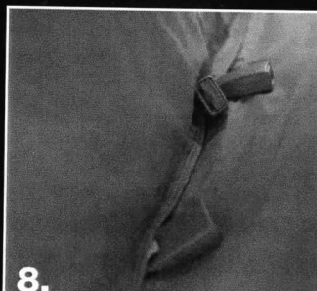
1. Mix one ounce of a gentle detergent, without bleach, per quart of warm water.

2. Spray or sponge onto the Seat Protector.

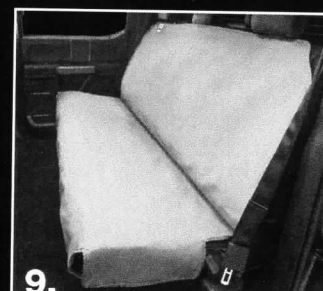
3. Rinse with plain water (until no suds) and allow to air dry.



7. To access the seatbelt buckles, separate the hook and loop closures on the seat cushion portion.



8. Pull the seatbelt buckles through, securing the hook and loop closures around the buckles.



9. Finish installation by pulling the bottom portion of the Seat Protector around the seat bottom, draping it from the seat to the floor.

Questions?
Call customer service at
(630) 769-1500

www.WeatherTech.com