

American Made = American Jobs

**IRON CROSS**  
AUTOMOTIVE INC.

**2015 Ford F-150**  
Front Bumper

**415-15**

[www.ironcrossautomotive.com](http://www.ironcrossautomotive.com)

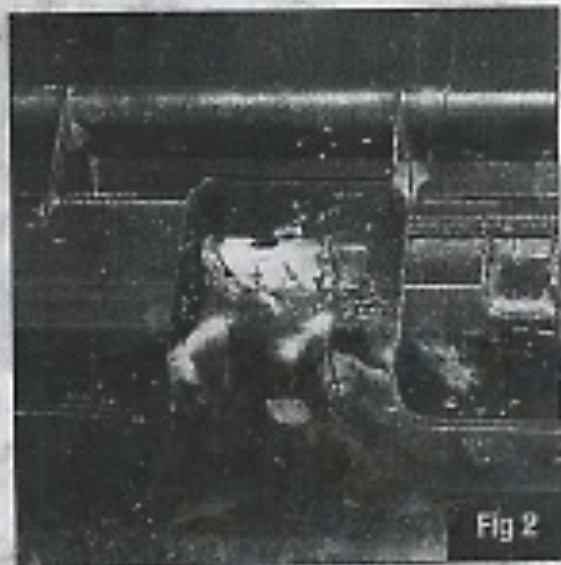
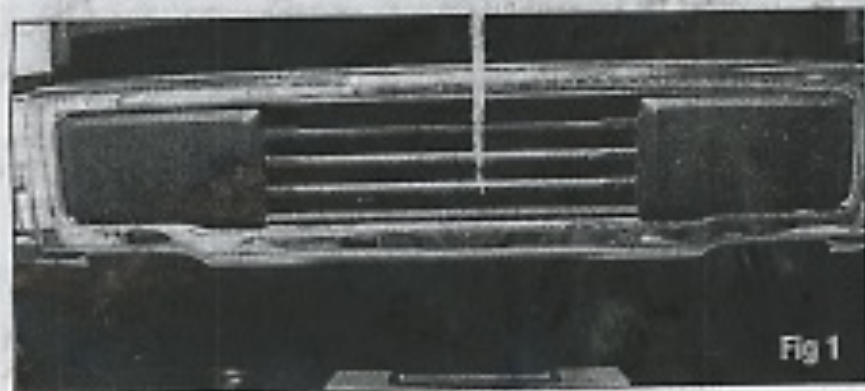
## Installation Instructions

### Front Bumper Hardware

6	1/2" Bolts	6	1/2" Nuts
6	1/2" Lock Washers	12	1/2" Flat Washers

### Stock Bumper Removal

1) Begin by removing the factory bumper front plastic insert. From the backside of the bumper, push the inserts plastic pegs through. FK 1 and 2.



**IRON CROSS AUTOMOTIVE**  
4942 E. 66th Street North,  
Tulsa, OK 74117  
[www.ironcrossautomotive.com](http://www.ironcrossautomotive.com)

## Stock Bumper Removal

2) Separate the body to bumper filler panel by pushing the panels plastic prongs through the bumper. FIG 3.

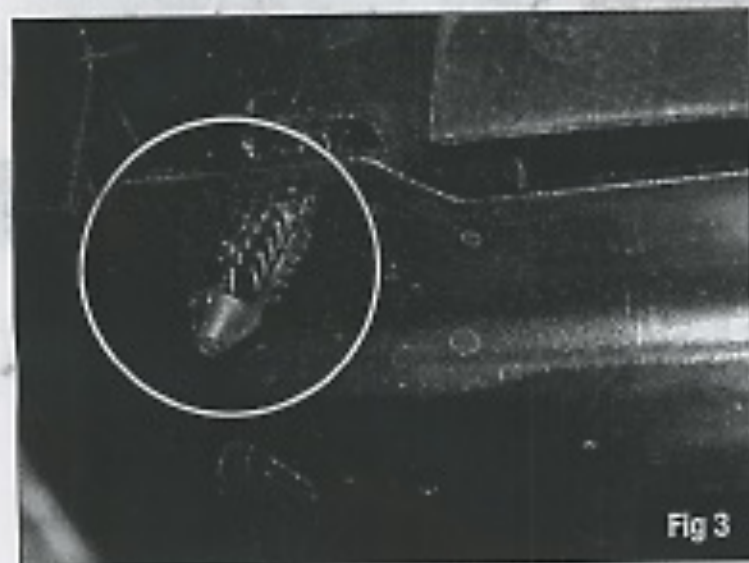


Fig 3

3) Underneath the truck, remove the factory nut on the outside of each frame rail (Driver side, Passenger side). FIG 4.

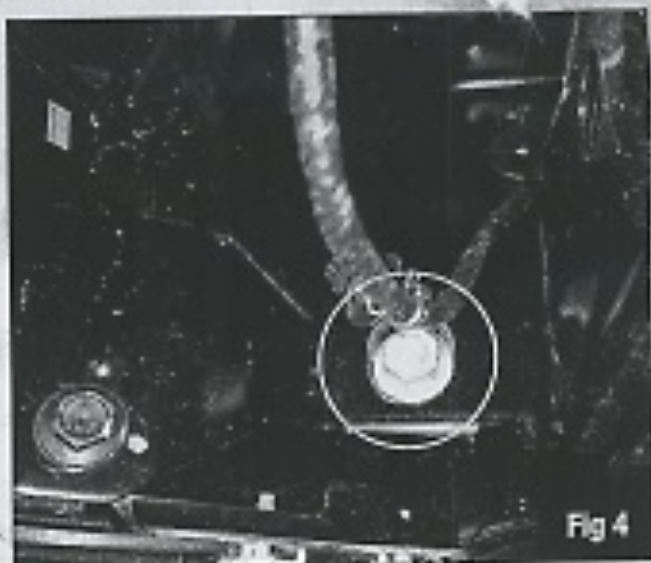


Fig 4

4) From the front of the truck, remove the four factory nuts shown in FIG 5



Fig 5

5) Remove the factory bumper from the truck.



**IRON CROSS AUTOMOTIVE**  
4942 E. 66th Street North,  
Tulsa, OK 74117  
[www.ironcrossautomotive.com](http://www.ironcrossautomotive.com)

## ICA Bumper Installation

6) Install the ICA front bumper brackets using the supplied hardware. FIG 6 and 7. Torque to 60 ft/lbs.

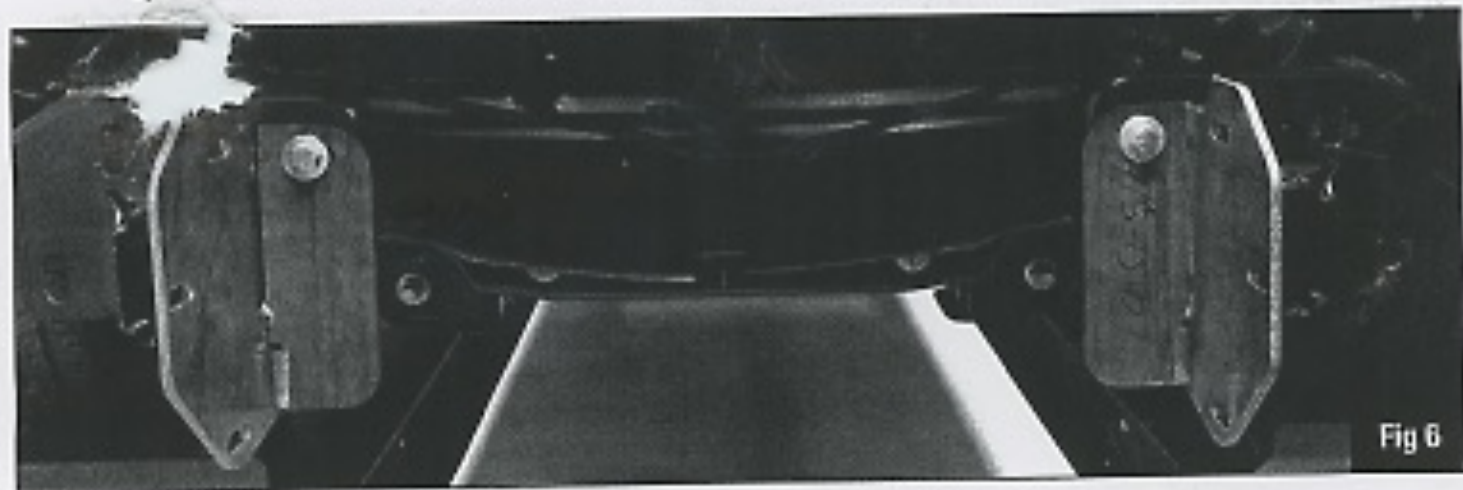


Fig 6

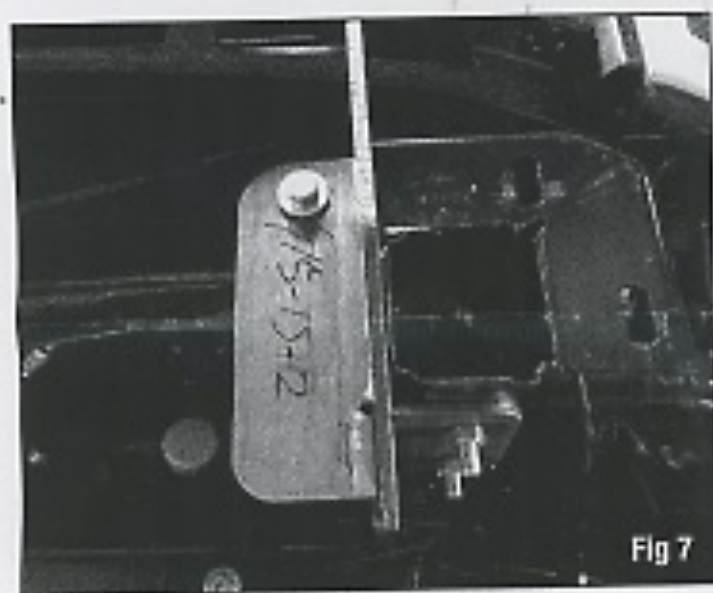


Fig 7

7) The welded brackets inside the ICA bumper will position on the outside of the frame installed brackets. Utilize three 1/2" bolts with a flat washers, then another flat washer, lock washers and 1/2" nuts for each bolt to secure the bumper FIG 8. Snug the mounting hardware at this time.

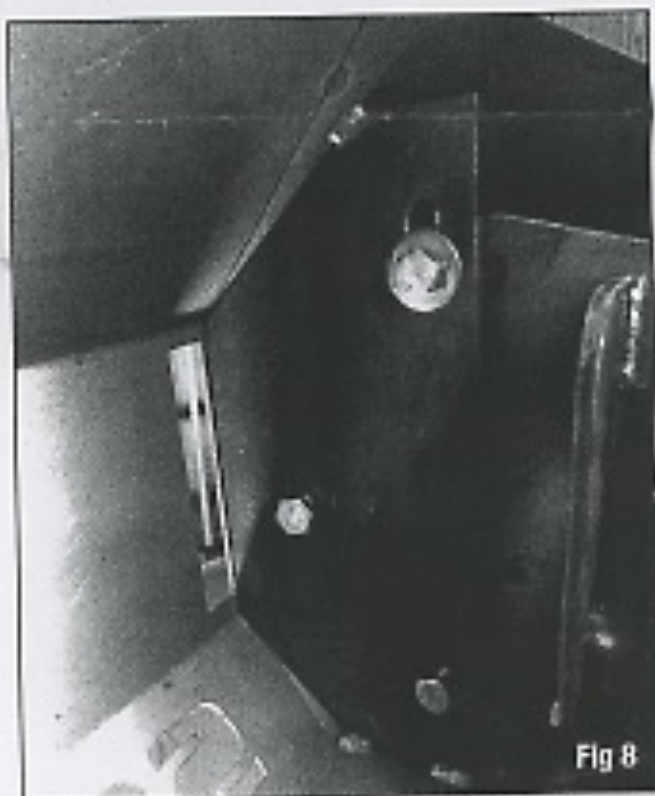


Fig 8

8) Position the ICA bumper to fit the truck and torque the mounting hardware to 60 ft/lbs at this time.



**IRON CROSS AUTOMOTIVE**

4942 E. 66th Street North,  
Tulsa, OK 74117

[www.ironcrossautomotive.com](http://www.ironcrossautomotive.com)

**INSTALLATION COMPLETE -  
ENJOY YOUR NEW ICA FRONT BUMPER**