

INCLUDED COMPONENTS

- 1 – Billet Grille (1 piece)
- 3 – 90° L Brackets
- 2–85° L Brackets
- 2– "Z" Brackets
- 14 – M4*20mm Phillips Screws
- 14 – M4 Flange Nuts

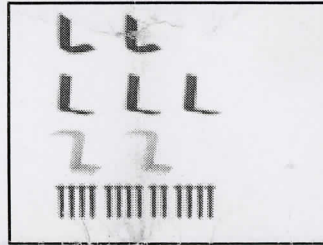


Figure 1 – Included Hardware

TOOLS REQUIRED

- Phillips Screw Driver
- 4mm wrench
- Drill

PLEASE READ AND UNDERSTAND ALL INSTRUCTIONS BEFORE STARTING THE INSTALLATION. THE MANUFACTURER IS IN NO WAY RESPONSIBLE FOR ANY PERSONAL INJURY OR VEHICLE DAMAGE THAT MAY OCCUR DURING THE INSTALLATION.

INSTALLATION INSTRUCTIONS

1. Inspect product and check components with items listed above.
2. Pop Hood, remove plastic shroud at the top and set fasteners aside.
3. Using factory instructions, remove the entire front grille shell (as pictured in all Figures).
4. Loosely attach L Brackets to the billet using phillips screws and flange nuts provided.
5. Put the billet to the grille shell cavity(Figure 2).
5. Mark drill locations on the grille shell through the holes of brackets. Drill eight holes at these spots.
6. Secure the billet to the grille shell also using phillips screws and flange nuts as shown in Figure 4.

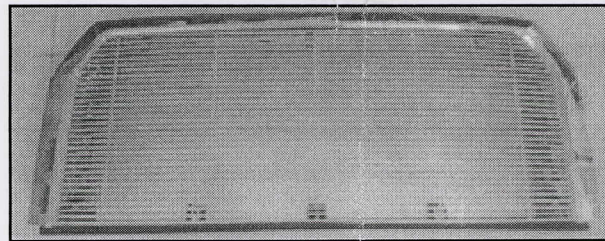
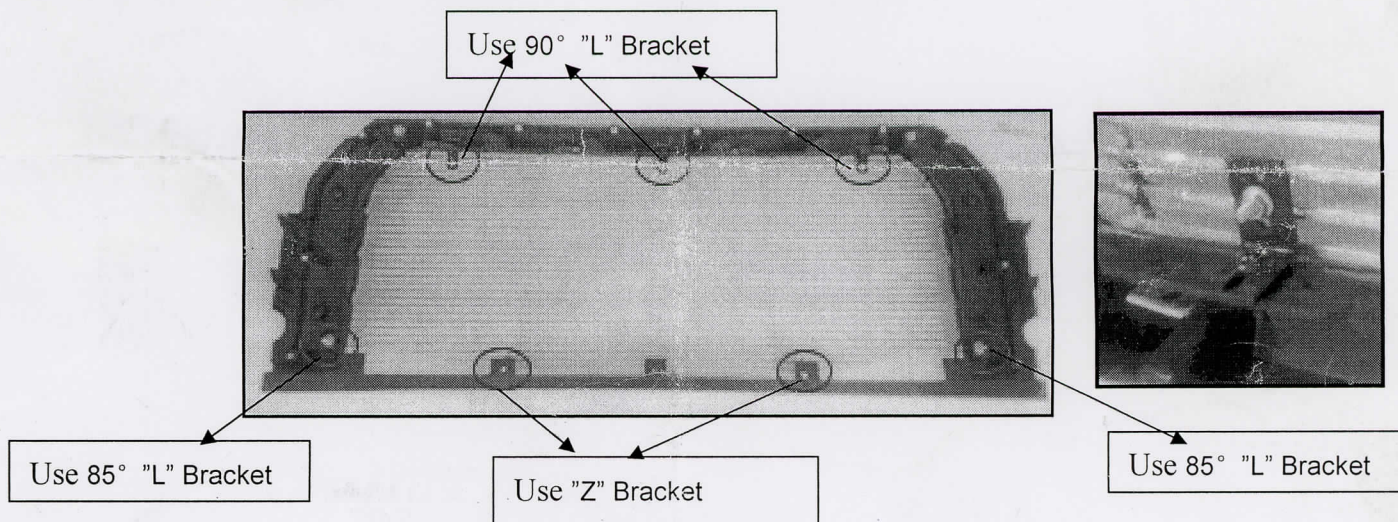


Figure 2

10. Once the Billet Grilles are loosely attached, center them and tighten all screws at the same rate.
11. Reinstall the plastic shroud with the fasteners removed in Step 2.



IMPORTANT NOTICE:

Carefully read the instructions before attempting to install this product. The manufacturer is in no way responsible for any damage to the vehicle or personal injury that may occur during the installation or use of this product.

NOTE: During shipping product might loose its convex shape or the bars may bend slightly. In order to get a proper fit, product might need to be re-shaped slightly by bending it BY HAND to regain its convex shape. Be careful not to damage the Billet Grille when bending.

INCLUDED COMPONENTS

- 1 – Billet Grille
- 4 – M4 x 20mm Phillips Screws
- 4 – M4 Flange Nuts
- 4 – 13X20mm Metal Bracket

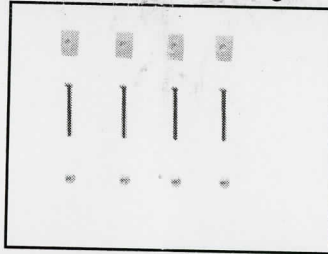


Figure 1 – Included Hardware

TOOLS REQUIRED

- Phillips Screwdriver
- 4mm Wrench

INSTALLATION INSTRUCTIONS

1. Inspect product and check components with items listed above.
2. Pop Hood, remove plastic shroud at the top and set fasteners aside.
3. Using factory instructions, remove the entire front grille shell.
4. Position the seven Billet Grilles onto grille shell cavity (Figure 2)
5. Loosely attach one the billet grille by holding a Metal Plate behind grille shell and inserting Phillips screws (from the front) through the billet grille holes and brackets. Secure them with Flange Nuts provided (Figure3).

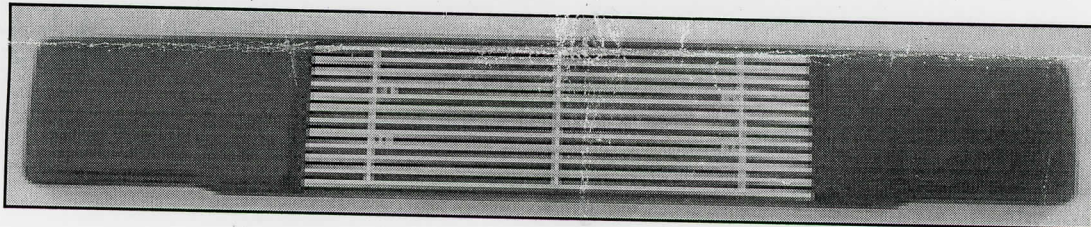


Figure 2 – Front view of positioning the billet grille onto grille shell

6. Repeat Steps 5 for the rest of Billet Grilles (Figure 2).

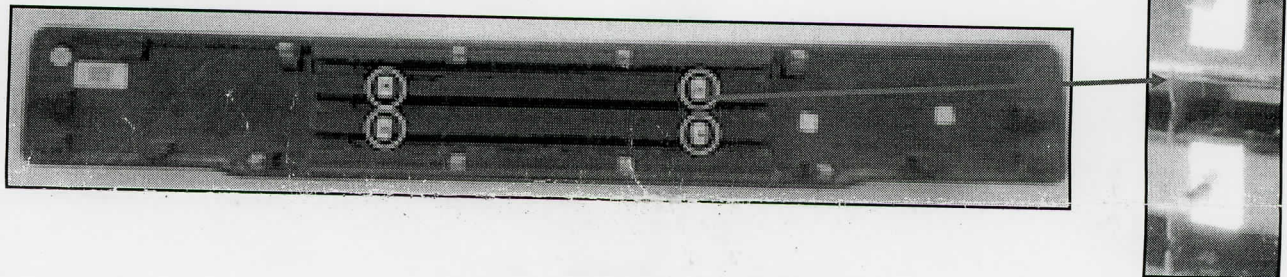


Figure 3 – All the billet grilles are installed

7. Once the Billet Grilles are loosely attached, center them and tighten all Phillips Screws at the same rate.
8. Reinstall the plastic shroud with the fasteners removed in Step 2.

