



**TRUXMART TRI FOLD
FOR TRUCKS WITHOUT BED UTILITY TRACKS**

***FOR TRUCKS WITH UTILITY TRACKS PLEASE REFER TO
OUR VIDEO INSTALLATION INSTRUCTIONS AVAILABLE
AT:**

WWW.TRUXMARTCOVERS.COM/TRUXMART_VIDEOS.HTML

REVISED December 18, 2011

- TRUXMART TONNEAU COVER
- FREE TAIL GATE SEAL
- WIDE LATCH HOOK SET (NOT NORMALLY REQUIRED)
- FRONT CLAMP PAD SET (NOT NORMALLY REQUIRED)
- SPARE ADJUSTABLE LOCKING CLAMP NUT/BOLT KIT
- INSTALLATION & ADJUSTMENT INSTRUCTIONS
- WARRANTY INFORMATION CARD

- RAIL BRACKETS (**FOR TRUCKS WITH FACTORY BED UTILITY TRACKS**)
- RAIL BRACKET ALLAN KEY (**FOR TIGHTENING RAIL BRACKETS INCLUDED FOR TRUCKS WITH FACTORY BED UTILITY TRACKS**)

PLEASE NOTE THE **SERIAL NUMBER** ON YOUR TRUXMART BOX. THIS NUMBER IS UNIQUE TO YOUR TRUXMART PRODUCT. **THIS SERIAL NUMBER WILL BE REQUIRED WHEN REGISTERING YOUR PRODUCTS WARRANTY ON:**

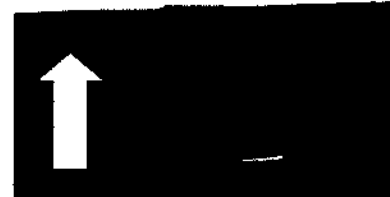
WWW.TRUXMARTCOVERS.COM/WARRANTY.HTML

**FAILURE TO REGISTER YOUR WARRANTY WITHIN
30 DAYS OF PURCHASING YOUR TRUXMART TRI
FOLD MAY VOID YOUR WARRANTY!**

REMOVE YOUR TONNEAU COVER FROM THE BOX AND REMOVE ALL PROTECTIVE CARDBOARD CASINGS OVER THE FRONT CLAMPS AND REAR HOOKS.



PLACE YOUR TONNEAU COVER ON YOUR TRUCK BED WITH THE SAFETY STRAP CLASPS (STITCHED ON REAR OF TONNEAU COVER) TOWARDS THE BACK WINDOW OF YOUR PICK UP TRUCK.



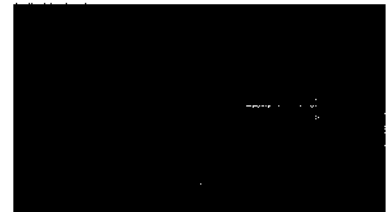
FRONT OF TRUCK

PLEASE SQUARE THE TONNEAU COVER UP TO THE SIDE BED RAILS AND FRONT BED WALL SO IT IS EVEN ON ALL THREE SIDES.



PLEASE NOTE THAT TRUXMART TRI FOLD NOW USES A PATENT PENDING LOCKING TRACK SYSTEM FOR OUR LATCHES AND CLAMPS. IT IS PRE ADJUSTED BASED ON FACTORY RECOMMENDED SETTINGS AND SHOULD NOT REQUIRE ANY ADJUSTMENTS. HOWEVER, IF YOU WOULD LIKE TO ADJUST THE POSITIONING OF YOUR CLAMPS, YOU MAY VIEW OUR INSTRUCTIONAL VIDEO AT: WWW.TRUXMARTCOVERS.COM/TRUXMART_VIDEOS.HTML

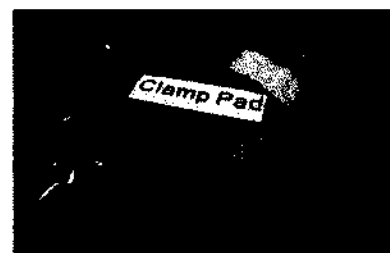
PULL REAR ALUMINUM CLAMP DOWN FROM ITS STOWED AWAY POSITION AND PLACE THE JAW PORTION OF THE CLAMP UNDER YOUR BED RAIL LIP.



HOLD THE CLAMP SO THAT IT IS AGAINST THE TRUCK BED RAIL LIP AND TURN THE ADJUSTMENT KNOB UNTIL THE TONNEAU'S METAL CLAMP IS SNUG AND THE COVERS SIDE "Q" SEALS ARE COMPRESSED, THEREFORE MAKING YOUR TRUXMART TRI FOLD WATER TIGHT. PLEASE REPEAT THIS STEP FOR BOTH THE LEFT AND RIGHT SIDE OF YOUR TRUCK.



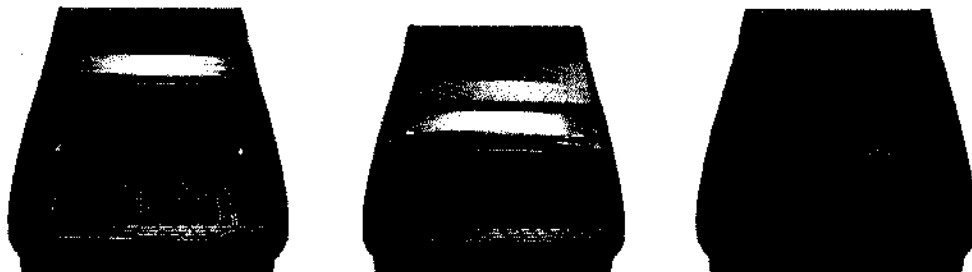
PLEASE NOTE YOU MAY PLACE THE SUPPLIED "CLAMP PADS" IN BETWEEN YOUR BED RAIL AND THE METAL CLAMP JAW AS TO AVOID DAMAGING THE FINISH OF YOUR TRUCKS BED RAIL LIP. ALSO NOTE THAT YOU MAY PEEL THE ADHESIVE BACKING ON THE CLAMP PADS AND STICK THE CLAMP PADS ON YOUR METAL CLAMP JAW.



IF THE TONNEAU COVER IS BUCKLED TOGETHER WITH THE SAFTEY CLASPS, PLEASE UNBUCKLE THE SAFTEY STRAPS AT THE FRONT OF THE TONNEAU COVER.

PLEASE BEGIN FOLDING YOUR TONNEAU COVER BACK TOWARDS THE TAIL GATE TO THE CLOSED POSITION. WHILE CLOSING THE TONNEAU COVER, INSPECT THE ALIGNMENT OF THE TONNEAU, ENSURING THAT IT IS EVEN ON BOTH SIDES OF THE TRUCK.

PLEASE NOTE THAT YOU SHOULD EXPECT SOME TENSION WHEN CLOSING THE TONNEAU COVER. THE VINYL TARP WILL ADJUST WITHIN 24 HOURS.



PULL THE REAR CAM LATCH DOWN FROM ITS STOWED AWAY POSITION AND PLACE THE JAW PORTION UNDER YOUR BED RAIL LIP. THIS LATCH IS ON A THREADED ROD AND WILL NEED TO BE ADJUSTED TO CLAMP SNUGLY TO YOUR TRUCKS BED RAIL. PLEASE TIGHTEN OR LOOSEN THE LATCH SO THAT IT CLAMPS FIRMLY WHEN IT IS IN THE "DOWN / LATCHED" POSITION.

TIP: TO ACHIEVE PERFECT TENSION, ADJUST THE CAM LATCH SO THAT WHEN IT IS IN THE "OPEN" POSITION THE JAW IS JUST UNDER THE BED RAIL LIP (MIDDLE PICTURE)



PLEASE NOTE THAT TRUXMART TRI FOLD NOW USES A PATENT PENDING LOCKING TRACK SYSTEM FOR OUR LATCHES AND CLAMPS. IT IS PRE ADJUSTED BASED ON FACTORY RECOMMENDED SETTINGS AND SHOULD NOT REQUIRE ANY ADJUSTMENTS. HOWEVER, IF YOU WOULD LIKE TO ADJUST THE POSITIONING OF YOUR CLAMPS, YOU MAY VIEW OUR INSTRUCTIONAL VIDEO AT:

WWW.TRUXMARTCOVERS.COM/TRUXMART_VIDEOS.HTML

HAVE QUESTIONS? PLEASE CONTACT US:

Truxmart
Tri-Fold

WWW.TRUXMARTCOVERS.COM

SERVICE@TRUXMARTCOVERS.COM

Toll Free: 1 (888) 554 8789