



Engineered to Deliver

1-800-501-1587

WWW.TRACRAC.COM

IN-42000_B

TracRac G2



Overhead Rack Installation Instructions

TracRac Inc.
994 Jefferson St.
Fall River MA 02721
www.tracrac.com
800-501-1587

Thank you for your purchase of a TracRac G2 Sliding Cargo Management System from TracRac®. TracRac® takes great pride in the quality and workmanship we put into every product. We designed the TracRac specifically to meet your cargo management needs and it will do just that. With 1250 lbs of load capacity and its heavy-duty aluminum construction you can be sure this rack can handle all of your gear.

To get started, please take a minute to reference the Component & Hardware page and ensure that you have everything necessary to install your new rack. The installation should take you approximately 65 to 90 minutes.

TABLE OF CONTENTS:

TracRac G2 Components & Hardware	Page. 2
Cleats/Base Assembly	Page. 3
Saddle Assembly	Page. 4
Crossbar Assembly	Page. 5
Cross Bar Assembly	Page. 6
Tiedown/End Cap Assembly	Page. 7
Truck Installation	Page. 8
Use & Care	Page. 9
Warranty	Page. 10
Product Registration	Page. 11

Required Tools:

- 7/32" Allen Key*
- 3/16" Allen Key*
- Tape Measure

Recommended Tools:

- 7/32" & 3/16" Hex Bit Socket
- 1/4" Socket Adaptor & Electric Drill**
- Socket Wrench

*An Allen key with a T-handle are best

**Please do not use an impact drill - a typical 12-18 volt drill is appropriate

PLEASE READ BELOW - IMPORTANT!

WARRANTY REGISTRATION FORM


- Please **DO NOT FORGET** to fill out your Warranty Registration Form on the back of this installation guide or online at www.tracrac.com. By completing (this form or on www.tracrac.com) and returning your **PRODUCT REGISTRATION FORM** you will receive these important benefits:

WARRANTY CONFIRMATION:

- Your prompt product registration confirms your right to the protection available under terms and conditions of your TracRac warranty.

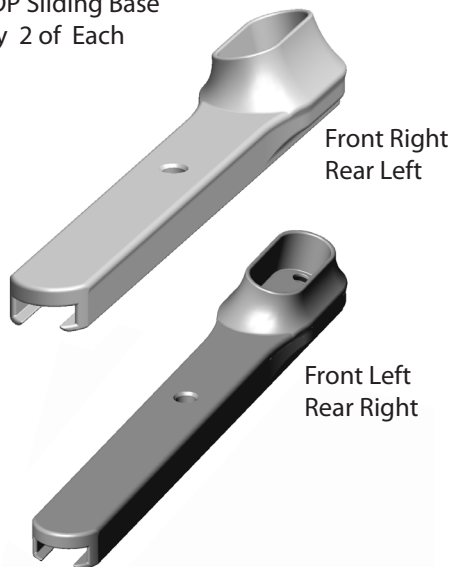
PRODUCT PROTECTION:

- We will keep the model number and date of purchase of your TracRac product on file to help refer to this information in the event of a product warranty issue.

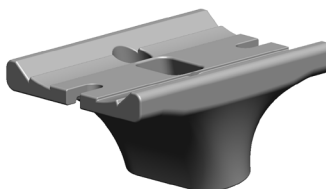
 Please follow these instructions carefully. Ensure that bolts are torqued to the specified rating and ensure that all diagrammed and instructed relative distances for components are met. Failure to do so will waive the warranty.

OVERHEAD RACK COMPONENTS

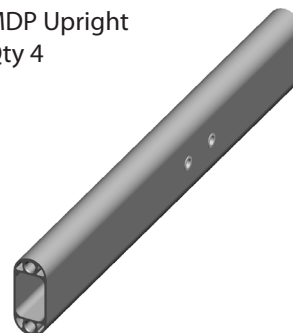
MDP Sliding Base
Qty 2 of Each



MDP Saddle
Qty 4



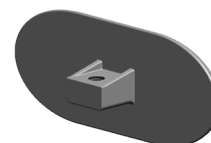
MDP Upright
Qty 4



ARC Side Cleat
Qty 4



Aluminum Crossbar
End Cap - Qty 4

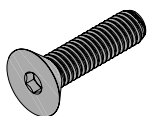


MDP Crossbar
Qty 2



OVERHEAD RACK HARDWARE

3/8 - 16 x 1.5"
Flat Head Cap Screw
(FHCS)
Qty - 16



3/8 - 16 x .625"
Button Head Cap
Screw (BHCS)
Qty - 8



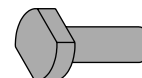
3/8 - 16
Square Nut
Qty - 8



1/4-20x 1.75"
Socket Head Cap
Screw (SHCS)
Qty - 8



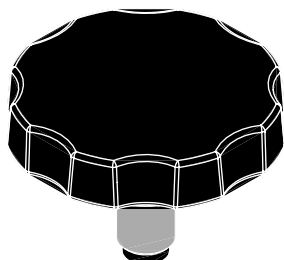
T-Bolt 3/8 - 16 x
1.125"
Qty: 4



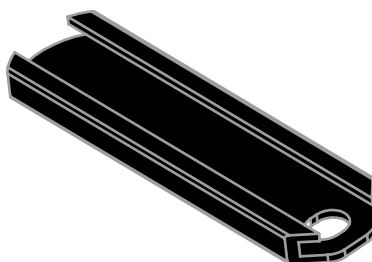
M6-1
Socket Head Cap
Screw (SHCS)
Qty - 4



Tracknob
Qty:4



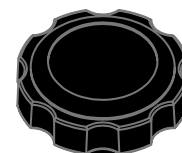
MDP Composite Base
Insert
Qty:8



Aluminum Crossbar
Tiedown
Qty:4



Tiedown Knob
Qty:4





Engineered to Deliver

1-800-501-1587

WWW.TRACRAC.COM

CLEAT ASSEMBLY:

1. Line the Cleat up over the rivet nut and bolt to the upright using the 1/4-20x 1.75" Socket Head Cap Screw (SHCS). See Image A
2. Torque to 6 ft-lbs. using 3/16 Allen Key.
3. Repeat for the remaining uprights (4 Total)

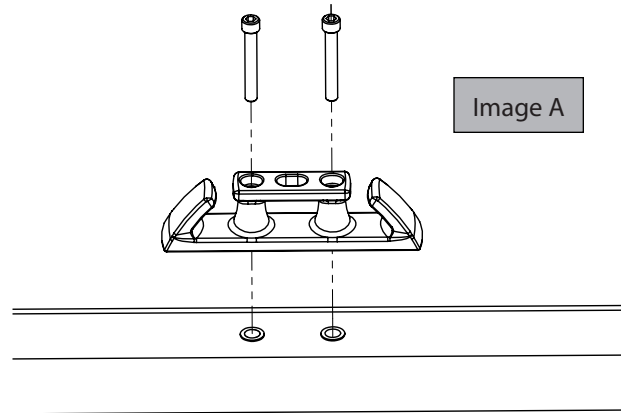


Image A

BASE ASSEMBLY:

Image B

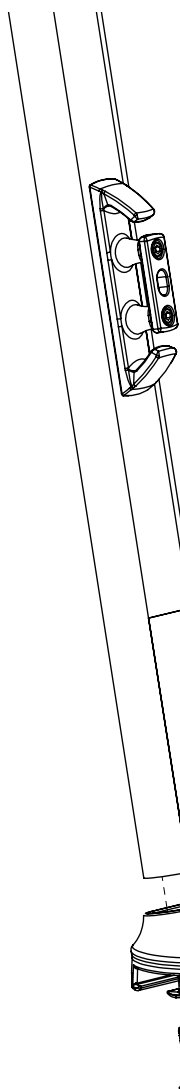
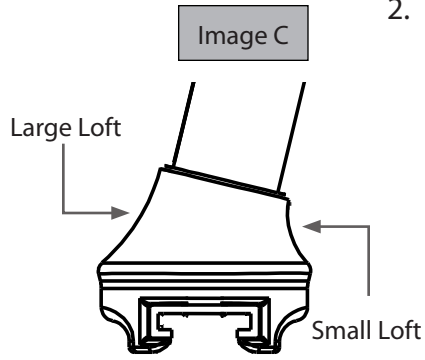


Image C



1. Insert the decal-end of the MDP Upright into the MDP Sliding Base.
 Important Note: Please make sure that the cleats are facing the larger loft of the base unit. See Image B (To double check, see Image C on the next page.)
2. Bolt the MDP Sliding Base to the MDP Upright using Two 3/8 - 16 x 1.5" (FHCS). Making sure the tool is fully inserted into the bolt, tighten using a 7/32 Allen Key.

Important Note: TracRac has intentionally made the tolerance between the bolt and the thread tight for maximum performance - Please hand-thread the bolts for the first few turns to ensure that proper engagement is achieved. You may also experience the need for additional force once the pink material engages the thread. This pink material is an assembly activated Loc-Tite that will ensure the rack does not need to be retorqued once installed.

3. Torque FHCS to 32 ft-lbs.
4. Insert the Composite Base Sliders (hole end first) into the MDP Sliding Base until they click into place. 2 Per Base See Image D
5. Repeat for the remaining uprights.

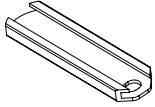
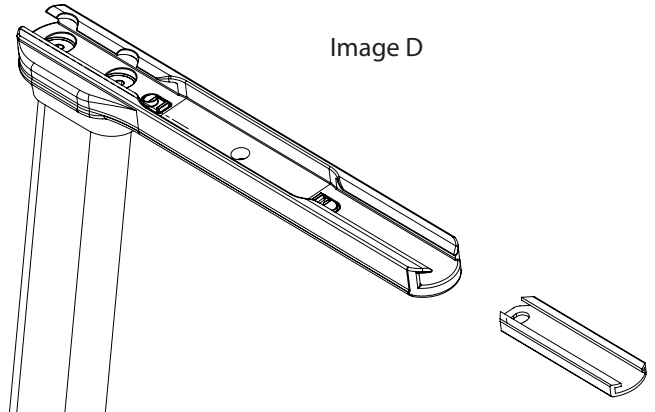


Image D



SADDLE ASSEMBLY:

1. Insert the non-decal end of the upright in the saddle unit.
Important Note: Please make sure that the small loft is facing the cleat side of the upright. (To double check, place the slider flat on the floor with the upright standing upwards. When the saddle is installed correctly the top of the saddle unit will be parallel to the floor.) See Image A & C
2. Bolt the MDP Saddle to the MDP Upright using Two 3/8 - 16 x 1.5"(FHCS). Tighten using a 7/32 Allen Key. Please note the guidelines from Base Assembly Step 2. See Image B
3. Repeat for the remaining three uprights
Important Note: If you are installing a Cantilever Extension refer to those instructions before assembling all of the saddles.

Image A

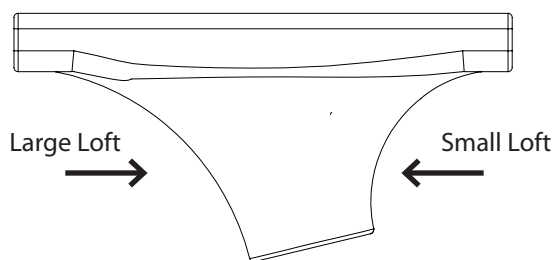


Image B

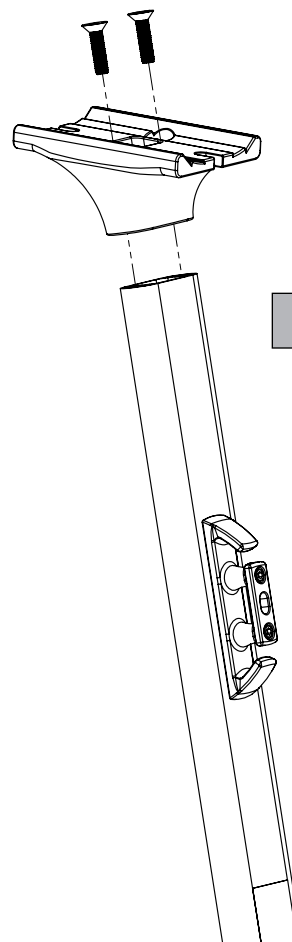
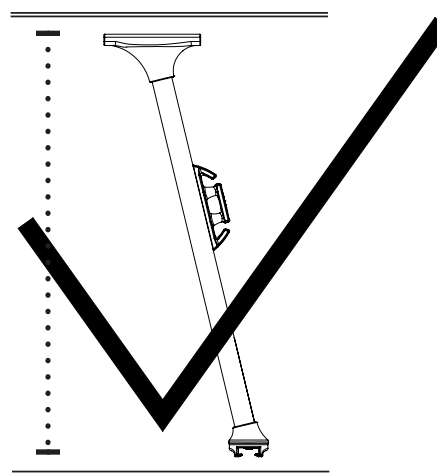


Image C





Engineered to Deliver

1-800-501-1587
WWW.TRACRAC.COM

CROSSBAR ASSEMBLY:

1. Pre-Thread the 3/8 - 16 x .625" (8) Button Head Cap Screw (BHCS) and the (8) Square Nuts with a $\frac{3}{4}$ turn and set aside. See Image A
2. Group together one right/left upright pair, a MDP Crossbar, and 4 of the BHCS/Square Nut pairs. See Image B

Note: When standing the racks right to left should angle towards one another; and front to back the elongated end of the sliders should be facing one another.
3. Take 2 of the BHCS/Square Nuts, with the square nuts facing up and place one into each of the slots of the MDP Saddle.
4. Take one of the MDP Crossbars and orientate the bar so that the bottom is facing the floor. See image C. Holding the bolts in the slots of the saddle slide the square nuts into the bottom T-Slot of the crossbar. See Image D
5. Do not tighten the bolts until step 5, repeat on the opposite side and the remaining pair of uprights.

Image A

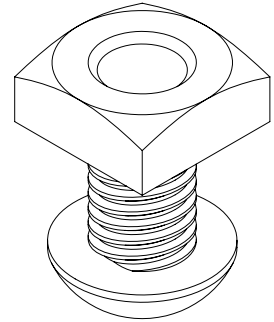


Image B

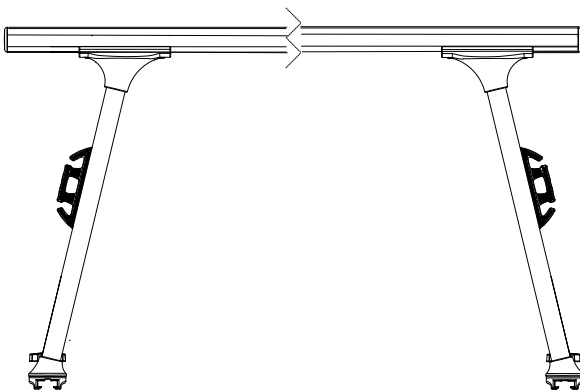


Image C

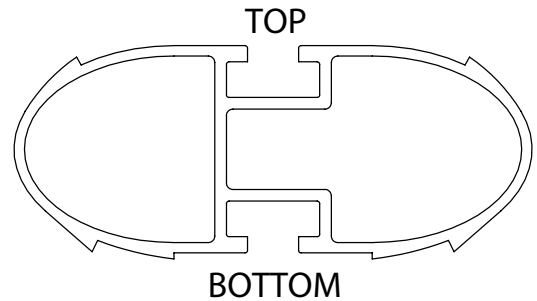
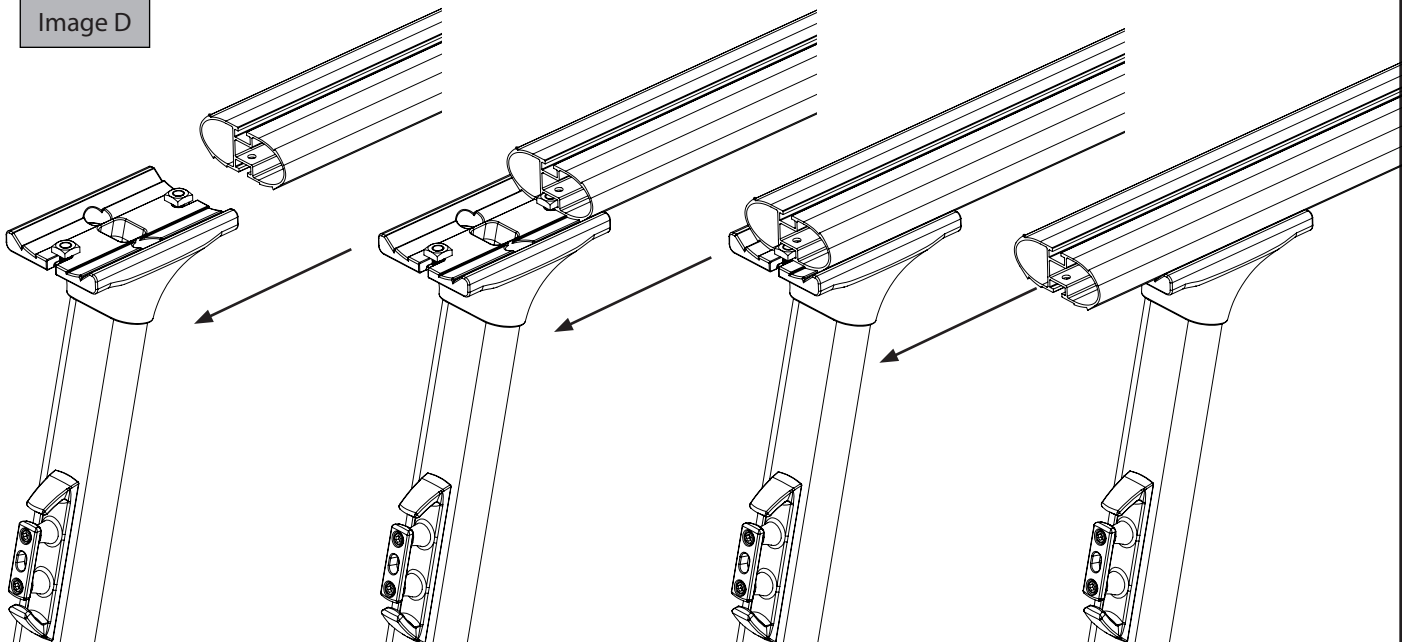
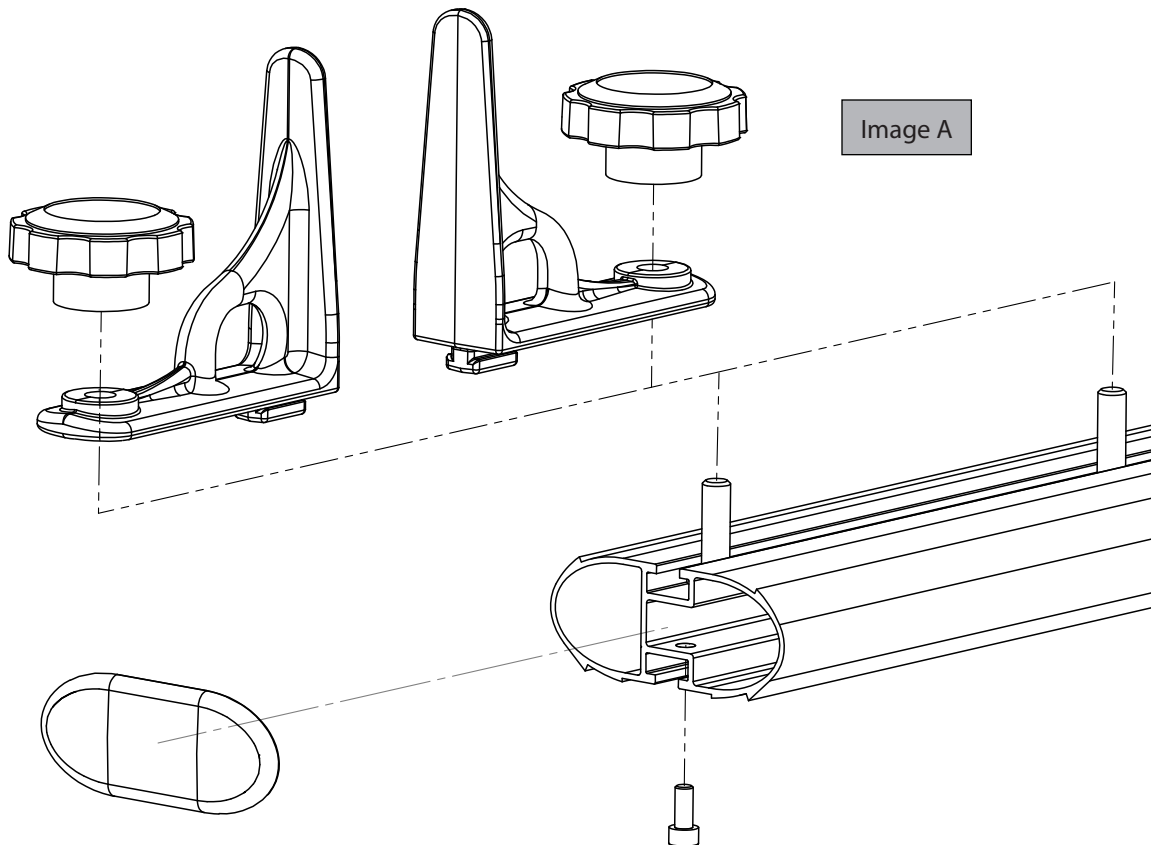


Image D



TIEDOWN & ENDCAP ASSEMBLY:

1. Remove the Aluminum Crossbar Tiedowns from the bubble wrap and locate 4 T-bolts and Tiedown Knobs.
2. Insert the T-bolt through the hole of the tiedown and loosely secure with the knob.
3. Slide the unit into the top track of the crossbar and twist the knob until securely in place.



4. Next locate the Aluminum Crossbar End Caps. Making sure the flat side of the end cap is facing towards the ground, insert the end cap into the crossbar and secure using the M6-1 Socket Head Cap Screw (SHCS). Tighten using a 3/16 Allen Key.

Image B

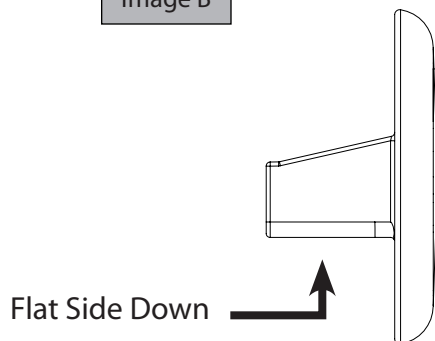
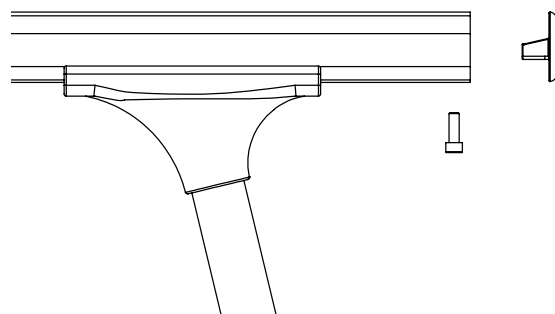


Image C



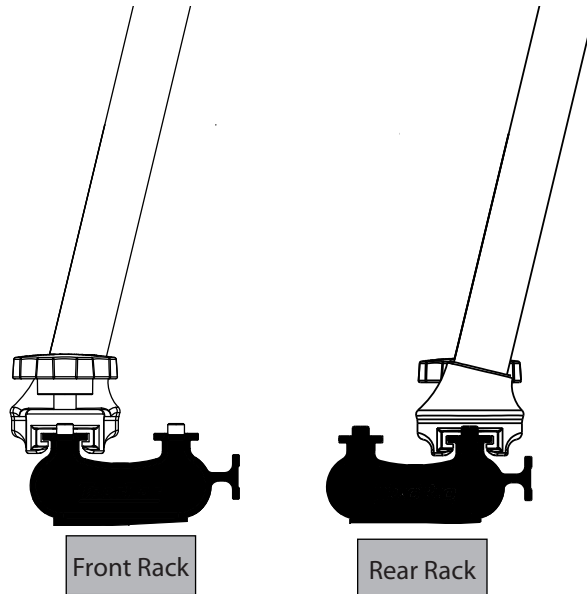


Engineered to Deliver

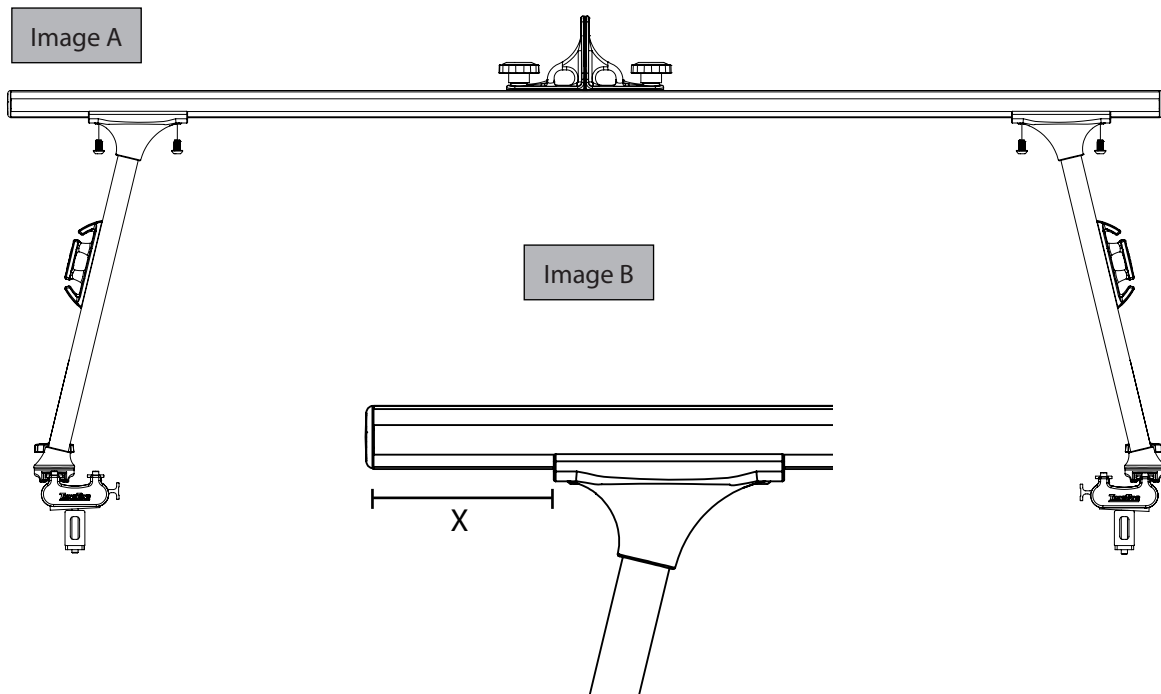
1-800-501-1587
WWW.TRACRAC.COM

TRUCK INSTALLATION:

1. Take one of the two racks (Front Rack – towards the cab) assemblies and slide the unit onto the outside track of the base rails. Take the other rack (Rear Rack – towards the tailgate) and slide onto the inside track. Once in place, insert the male knob into the slider and tighten until the saddle is parallel to the ground.

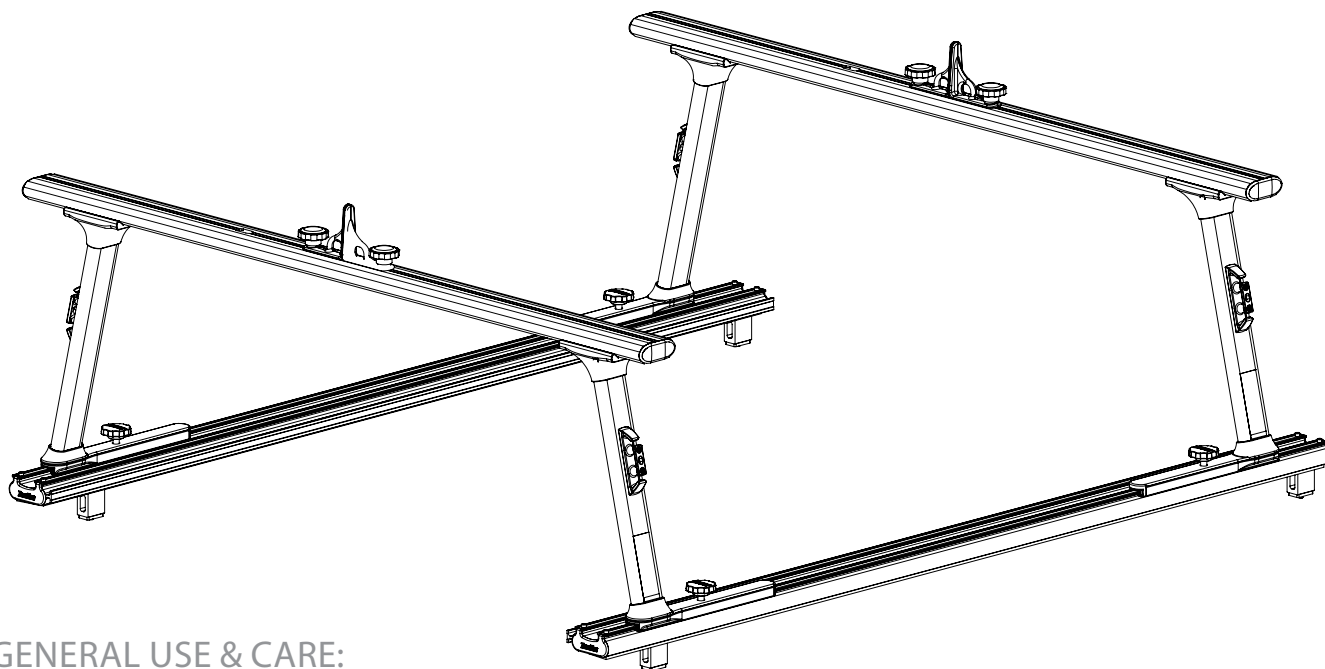


2. Once on the vehicle, starting with two bolts on the inside of the rack, tighten the BHCS securing the crossbar to the saddles.
3. Torque BHCS to 27 ft. lbs. using the 7/32 Allen Key.
Note: You will want to make sure that the crossbar is centered on the vehicle. To do this, measure from the tip of the crossbar to the saddle. Ensure that dimension X is the same on both sides of the crossbars.



4. Loosen the male knobs in the slider to ensure that both racks slide smoothly on the base rails.

NOTE: If the racks are not sliding: Double check to make sure your base rails are parallel and square. Check the sliders and make sure they are centered on the t-tracks of the base rails – if they are hitting the track on one side or the other, adjust the saddle/crossbar connection to ensure an even disposition of the rack relative to the base rails.



GENERAL USE & CARE:

Please read the following guidelines - it is very important that you follow these instructions to ensure your rack continues to function properly and to ensure your product remains covered under the TracRac Limited Lifetime Warranty.

- **KNOBS:** The knobs on your TracRac are made from stainless steel. To prevent them from seizing up (especially in the winter), 1-2 times/season, remove all 4 of the TracKnobs from the Sliding Base and clean any buildup on the threads with a piece of Scotch-Brite™ or similar abrasive cloth. After the threads are clean, spray the threads of the knobs and the threads of the base with WD-40®, Never-Seize type lubricant or similar anti-seize lubricant. (Common household Vaseline can suffice).
- **TIEDOWNS:** Make sure tiedowns knobs are secured properly before securing any load to the rack.
- **ELECTRICAL:** When mounting lights or other electrical systems to your TracRac, do not use any component of the system as a ground or to carry an electrical current. Always run 2 wires to the electrical unit - One positive lead to the switch for power and one ground lead to the frame of the vehicle. Make sure the power lead has an appropriate size fuse.
- **LOAD RATING:** TracRac G2 is capable of carrying a maximum of 1250 lbs., evenly distributed when configured with the rear rack mounted on the inner track and both racks at opposite ends of the base rails.
- **SAFETY:** For good performance and safety, periodically check that the base rails remain parallel and secure. Re-torque all fasteners to the proper specifications after the first 500 miles and every 10,000 miles thereafter. Lubricate the threaded portion of all knobs every 2000. Carrying heavy loads over rough roads with excess speed may damage the system. Always properly secure all cargo. Exercise good judgment at all times.



TracRac® Limited Lifetime Warranty

TracRac® Limited Lifetime Warranty

TracRac® Incorporated will warranty all TracRac® truck and van racks manufactured by TracRac® Incorporated during the time that an original retail purchaser owns the product. TracRac® will warranty all other accessories for a period of 2 years from the date of purchase. This warranty terminates if a purchaser transfers the product to any other person. To activate this warranty, the original purchaser must complete and return the Product Registration Card included with the product or complete the Warranty Registration on the TracRac® website at <http://www.tracrac.com>, to enable TracRac® to verify original ownership.

Subject to the limitations and exclusions described in this warranty, TracRac® will remedy defects in the structural integrity of the product related to materials or workmanship by repairing or replacing, at its option, a defective product without charge for parts or labor. In addition, TracRac® may elect, at its option, not to repair or replace a defective product but rather to issue to a purchaser a refund equal to the purchase price paid for the product or a credit to be used toward the purchase of a new TracRac® product.

No warranty is given for defects caused by shipping damage, normal wear and tear, cosmetic discoloration, scratches or chips, road hazards, accidents, unlawful vehicle operations, or modification of, or any types of repair of a truck or van rack system other than those authorized by TracRac®.

No warranty is given for defects resulting from conditions beyond TracRac's control including, but not limited to, misuse, overloading, or failure to assemble, install or use the product in accordance with TracRac's written instructions or guidelines included with the product or made available to the purchaser.

No warranty is given for TracRac® products purchased outside of the United States, Canada and Mexico.

In the event that a product is defective, the purchaser should contact the TracRac® Customer Service group in writing or by phone at: 994 Jefferson Street, Fall River, MA 02721 Attn: Customer Service 1 (800) 501 1587

In the event that a product needs to be returned to TracRac®, a TracRac® Customer Service Representative at the address or telephone number listed above will provide the purchaser with the appropriate mailing address and any additional instructions. Please note that the purchaser will be responsible for the cost of mailing the product to TracRac® and that proof of purchase in the form of an original purchase invoice or receipt and a detailed description of the defect must be included in the mailing.

DISCLAIMER OF LIABILITY

Repair or replacement of a defective product or the issuance of a refund or credit (as determined by tracrac) is a purchaser's exclusive remedy under this warranty. Damage to a purchaser's vehicle, cargo and/or to any other person or property is excluded. This warranty is expressly made in lieu of any and all other warranties, express or implied, including the warranties of merchantability and fitness for a particular purpose. Tracrac's sole liability to any purchaser is limited to the remedy set forth above. In no event will tracrac be liable for any lost profits, lost sales, or for any consequential, direct, indirect, incidental, special, exemplary, or punitive damages or for any other damages of any kind or nature. Some states do not allow the exclusion or limitation of incidental or consequential damages, so the above limitations may not be applicable. This warranty gives you specific legal rights, and you may also have other rights, which may vary from state to state.

WARRANTY REGISTRATION FORM

By completing (the form on the next page or on tracrac.com) and returning your PRODUCT REGISTRATION FORM you will receive these important benefits:

WARRANTY CONFIRMATION:

Your prompt product registration confirms your right to the protection available under terms and conditions of your TracRac warranty.

PRODUCT PROTECTION:

We will keep the model number and date of purchase of your TracRac product on file to help refer to this information in the event of a product warranty issue.

WARRANTY REGISTRATION FORM

PERSONAL INFORMATION:

Name(First/Last): _____
Company: _____
Street Address: _____
City: _____
State: _____
Zip: _____
Email: _____

TRUCK INFORMATION:

Make: _____
Model: _____
Year: _____

DATE OF PURCHASE:

MM/DD/YYYY: _____

- What TracRac rack model(s) did you purchase?

TracRac CabRac CapRac
T-Rac G2 TracVan Single Other, please
TracONE TracVan Double specify: _____
ConTractor TracVan Triple

- What TracRac accessories, if any, did you purchase?

TracBox Locking Knobs Kayak Mount
TracBox CO Toolbox Mount Kit Cargo Buckle
Cantilever Base Rail Tie Downs None
Tonneau Cover Cross Bar Tie Downs Other, please specify:
Cargo Divider Bike Mount _____

- What was the total purchase price of the TracRac products you purchased? \$ _____.

- Where did you purchase your TracRac product(s)?

Name: _____
Type of Retailer _____

OVERALL EXPERIENCE SATISFACTION

How satisfied are you with your overall purchase of your TracRac product?

Very Unlikely to Recommend 1 2 3 4 5 6 7 Very Likely to Recommend

How likely would you be to recommend TracRac products to a friend, family member or business associate?

Very Unlikely to Recommend 1 2 3 4 5 6 7 Very Likely to Recommend

LEARNING PROCESS

- What event, if any, triggered the need for you to purchase this TracRac product?

Bought a new truck
Started a new business
Expanded existing business
Bought new sporting equipment (e.g. Kayak, Canoe)
Old rack needed replacement
Just saw it and wanted one

- How did you first learn about this or any other competitive products?

Saw on the road
Talked to sales/store personnel
Looked on the internet
Asked friends or colleagues
Magazine articles or advertisements
Television/Radio shows or advertisements
Store circulars or advertisements

- Where did you go to gather additional information about our products or competitive products? (Check all that apply)

Store
Friends or Colleagues
Product Websites
Internet Forums or Blogs
Other Websites
Company telephone customer support
None

RESEARCH AND USAGE

- What other brands, if any, did you consider before buying your TracRac product(s)? (Check all that apply)

Thule Vanguard
Weather Guard RackIt
System One Pace Edwards
Kargo Master None
Hauler Other, please specify: _____
Cross Tread _____

- What product features most influenced the purchase of your TracRac product(s)? (Check all that apply)

Brand Reputation Quality of Finish
Style/Appearance No Rust Aluminum Material
Load Capacity (How much weight/volume it carries) Reliability/Long Lasting
Load Flexibility (The ability to carry lots of different kinds of loads) Light Weight
Sliding/Easy to Remove Low Wind Noise
Price Quality of Design/Construction
No Drill Mounting Warranty
Other, please specify: _____

- What do you intend to carry with your TracRac product(s)? (Check all that apply)

Lumber Other Sports Equipment (e.g. Surf Boards, Snow Boards, etc...)
Ladders Other Home Building/Improvement Products
Other Home Building/Improvement Products Other, please specify: _____
Kayaks/Small Boats Bikes

MAY BE COMPLETED ONLINE @ WWW.TRACRAC.COM

MAY BE COMPLETED ONLINE @ WWW.TRACRAC.COM

PURCHASE AND INSTALLATION SATISFACTION

Please tell us how satisfied you were with the following elements of your initial TracRac Experience:

1. How easy it was to learn about our products?

Very Unlikely to Recommend 1 2 3 4 5 6 7 Very Likely to Recommend

2. How easy it was to choose the right TracRac product for your needs?

Very Unlikely to Recommend 1 2 3 4 5 6 7 Very Likely to Recommend

3. Ability to find a place to purchase our products ?

Very Unlikely to Recommend 1 2 3 4 5 6 7 Very Likely to Recommend

4. How knowledgeable your sales person was about our products?

Very Unlikely to Recommend 1 2 3 4 5 6 7 Very Likely to Recommend

5. How long it took to get your product delivered?

Very Unlikely to Recommend 1 2 3 4 5 6 7 Very Likely to Recommend

6. The quality of the installation (if you paid for installation)

Very Unlikely to Recommend 1 2 3 4 5 6 7 Very Likely to Recommend

7. Length of time to install our product (if you self-installed)

Very Unlikely to Recommend 1 2 3 4 5 6 7 Very Likely to Recommend

8. How well the product fit your truck / How the rack looks on your vehicle?

Very Unlikely to Recommend 1 2 3 4 5 6 7 Very Likely to Recommend

• Please tell us if there is anything we could do better in the future:

• Please tell us if you have any product improvements or suggestions:

DEMOGRAPHIC INFORMATION:

This information will be used in aggregate form only to help us determine how best to provide our target customers with information in the future. This information will never be used or provided to anyone for any other purposes.

- What will you use your truck for?
 Work Only
 Personal Only
 Work & Personal

- If you selected "Work" as a use for our products please tell us which of the following best describes your type of work. (Circle all the apply)

- | | |
|-------------------------|-------------------------|
| Residential Contracting | Carpentry / Cabinetry |
| Commercial Contracting | Masonry / Concrete |
| Roofing | Construction Management |
| Plumbing | Engineer/Architect |
| Electrical Contracting | Other, please specify |
| Painting | |

- Which of the following activities do you participate in or have an interest in? (Circle all the apply)

- | | |
|------------------------|------------------------------|
| Skiing / Snowboarding | Golf |
| Dirt Bike / ATV Riding | Automotive Repair/Tuning |
| Kayaking / Canoeing | NASCAR / Auto Racing |
| Boating / Sailing | DIY / Home Repair-Remodeling |
| Hunting / Fishing | Gardening |
| Camping / Hiking | Other, please specify |
| Bicycling | |

• Date of Birth: _____

• Education Level

- | | |
|--|--|
| Some High School..... <input type="checkbox"/> | Graduate Degree (Masters, Doctorate)..... <input type="checkbox"/> |
| High School Graduate..... <input type="checkbox"/> | |
| College Degree..... <input type="checkbox"/> | |

• Which best describes your family income? (Circle)

- | | |
|-------------------|---------------------|
| Under \$25,000 | \$100,00-\$149,999 |
| \$25,000-\$49,999 | \$150,000-\$199,999 |
| \$50,000-\$74,999 | \$200,000 or over |
| \$75,000-\$99,999 | |

• Would you like us to notify you when TracRac launches new products or has major sales/promotions?

- Yes, please use my mailing address.
 Yes, please use my E-Mail address.....

Email: _____

Please Mail your completed Product Registration Form to :

TracRac Inc.
 Product Registration
 994 Jefferson St. Fall River, MA. 02721

PRODUCTION CODE: