

INSTRUCTIONS—INSTRUCCIONES—CONSIGNES

APPLICATION: 04-08 FORD F150
APP PART # 57-2010, 57-2015
HDX GRILLE GUARD

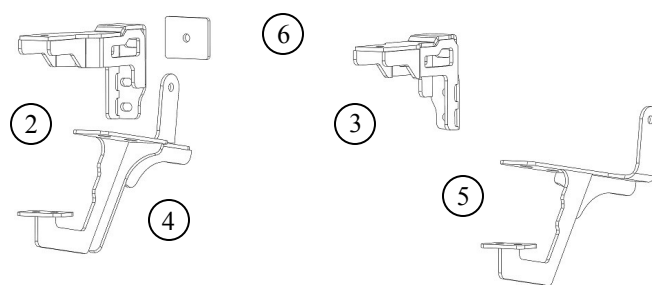
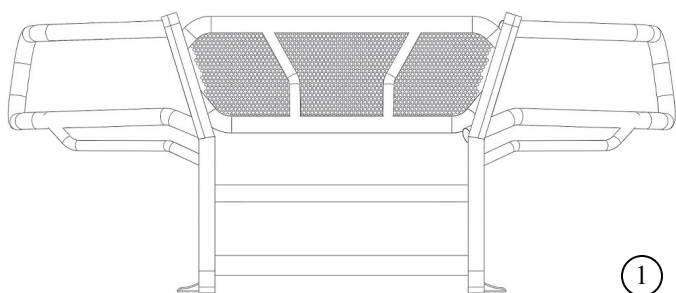
ITEM	QUANTITY	DESCRIPTION	TOOLS NEEDED
1	1	GRILLE GUARD	18MM SOCKET
2,3	2	UPPER MOUNTING BRACKETS (2) DRIVERS SIDE, (3) PASSENGER SIDE	RATCHET
4,5	2	LOWER MOUNTING BRACKETS (4) DRIVERS SIDE, (5) PASSENGER SIDE	TORQUE WRENCH
6	2	SUPPORT PLATE	
7	8	M12 X 50MM HEX HEAD BOLTS	
8	2	M12 STUD PLATES	
9	6	M12 HEX NUTS	
10	10	M12 LOCK WASHERS	
11	10	M12 X 37MM OD FLAT WASHERS	
12	4	M12 X 24MM OD FLAT WASHERS	
13	2	M12 NUT PLATES	
14	6	M12 HEX HEAD BOLTS (BLACK OR RAW STAINLESS)	
16	12	M12 FLAT WASHERS (BLACK OR RAW STAINLESS)	
17	6	M12 LOCK WASHERS (BLACK OR RAW STAINLESS)	
18	6	M12 HEX NUTS (BLACK OR RAW STAINLESS)	
19	2	PLASTIC RETAINERS	

1. Remove contents from box, verify all parts listed are present and free from damage. Carefully read and understand all instructions before attempting installation. Note: anti seize must be used on all stainless steel fasteners to prevent from galling.
2. Starting from the front of the vehicle remove the factory hardware that mount the tow hook to the frame. Once the tow hooks are removed set them aside, they will be reinstalled on the vehicle (if your vehicle is not equipped with tow hooks skip this step) (Fig 1).
3. Remove the factory nut plate that is used to install the tow hooks and replace them with the (2) M12 nut plates that are in the hardware kit. Starting at the drivers side take the lower mounting brackets and align it with the nut plate, attach the bracket to the nut plates using (2) M12 hex head bolts, (2) M12 lock washers, and (2) M12 x 37mm flat washers (Note : If vehicle is equipped with tow hooks and you would like to re use them place them over the lower mounting bracket then attach as stated previously) (Fig 2) . Locate the factory hole on the outside of the frame rail and insert (1) M12 stud plate into the frame, hold the stud plate in place by threading (1) plastic retainer onto the stud (Fig 3). Attach the lower mounting bracket to the stud plate using (1) M12 x 37mm flat washer, (1) M12 lock washer, and (1) M12 hex nut. Do not fully tighten at this time. Repeat step 3 for passenger side
4. Next move to the upper opening in the bumper and remove the factory hardware shown in (Fig 4 and 5) Note: when the nut is removed there is a metal locking washer on the bolt, the bolt must be pried free to be removed. Once removed align the drivers side upper mounting bracket to the existing holes in the frame. Before attaching the upper mounting brackets to the frame for the upper mounting hole a support plate must be placed behind the frame before being attached (fig 5) (for 04– 05 model years the bracket will attach to the frame with the upper mounting hole and middle mounting holes in the bracket, for 06-08 model years the bracket will attach to the frame using the upper and bottom mounting holes in the bracket). Attach the upper mounting

- bracket to the frame using (2) M12 hex head bolts (2) M12 x 24 mm flat washers, (2) M12 x 37mm flat washers, (2) M12 lock washers, and (2) M12 hex nuts. Repeat this step for the passenger side. Do not fully tighten at this time. (Fig 6)
5. With assistance take the grille guard and align it with the mounting brackets. Attach the grille guard to the mounting brackets using (6) M12 hex head bolts (stainless), (12) M12 flat washers (stainless), (6) M12 lock washers (stainless), and (6) M12 hex nuts (stainless). Do not fully tighten at this time. (Fig 7 and 8)
 6. Align and adjust grill guard as needed then tighten all hardware at this time. Torque all M12 hardware to 55 ft lbs

CARE INSTRUCTIONS

- REGULAR WAXING IS RECOMMENDED. DO NOT USE ANY TYPE OF POLISH OR WAX THAT MAY CONTAIN ABRASIVES
- STAINLESS STEEL PRODUCTS CAN BE CLEANED WITH MILD SOAP AND WATER. STAINLESS STEEL POLISH SHOULD BE USED TO POLISH SMALL SCRATCHES.
- GLOSS BLACK FINISHES SHOULD BE CLEANED WITH MILD SOAP AND WATER



Westing Automotive Products, Inc.
5200 N. Irwindale Ave. Suite 220
Irwindale, Ca. 91706

7/17/2011 P.N.: 75-0017-RevB

Thank You for choosing Westin products
For Additional installation assistance please call
Customer service (800) 793-7846
www.westinautomotive.com



Fig 3



Fig 4

Support plate is placed here

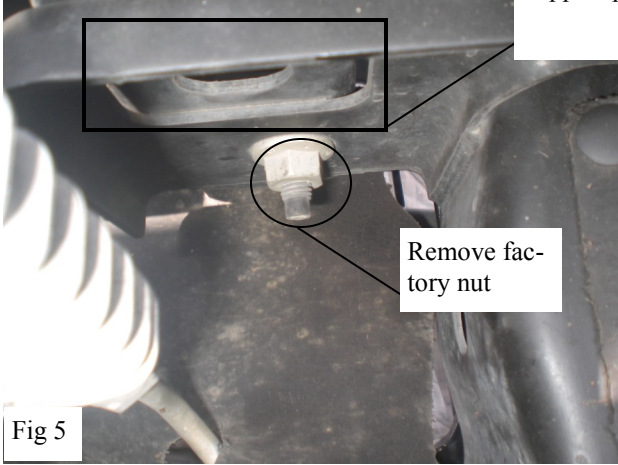


Fig 5

Remove factory nut

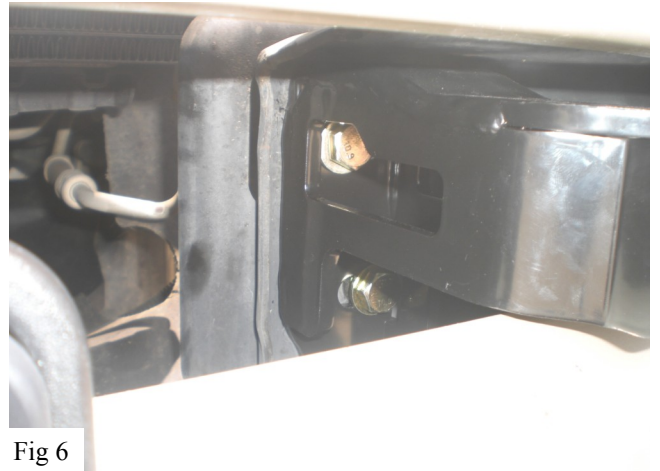


Fig 6



Fig 7



Fig 8



Installation complete

Westin.
SIGNATURE OF QUALITY

Westing Automotive Products, Inc.
5200 N. Irwindale Ave. Suite 220
Irwindale, Ca. 91706

7/17/2011 P.N.: 75-0017-RevB

Thank You for choosing Westin products
For Additional installation assistance please call
Customer service (800) 793-7846
www.westinautomotive.com