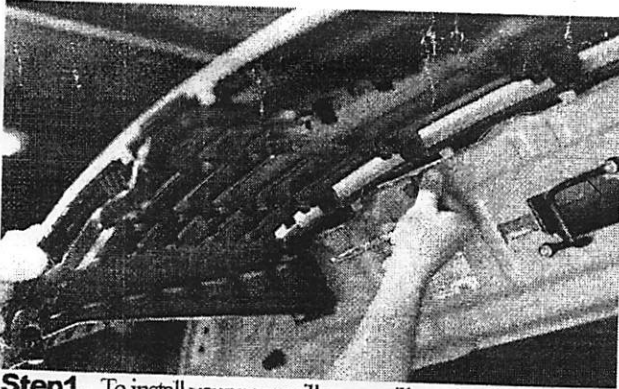


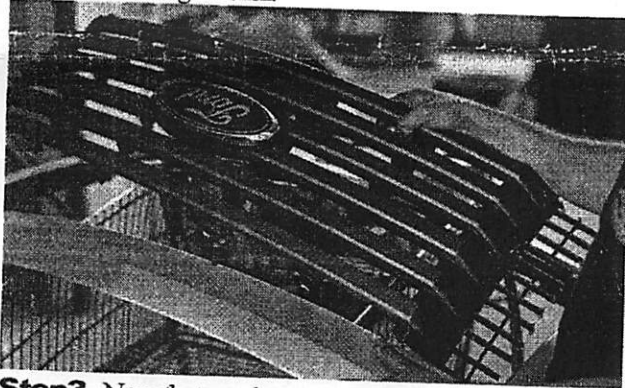


2009 FORD F-150

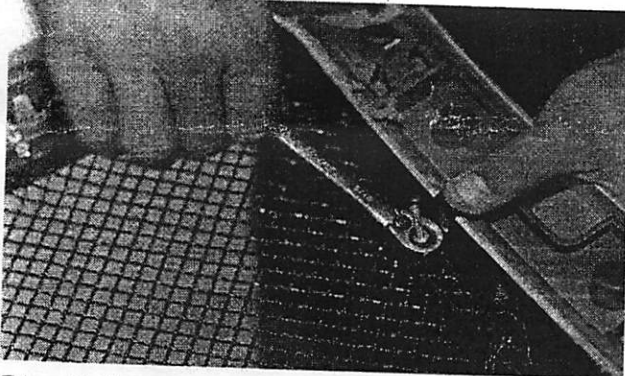
## INSTALLATION INSTRUCTIONS



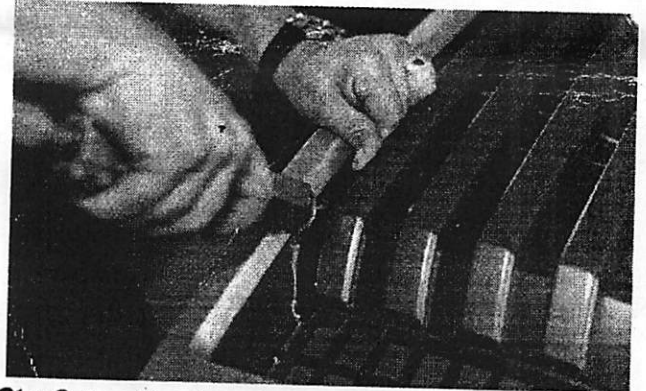
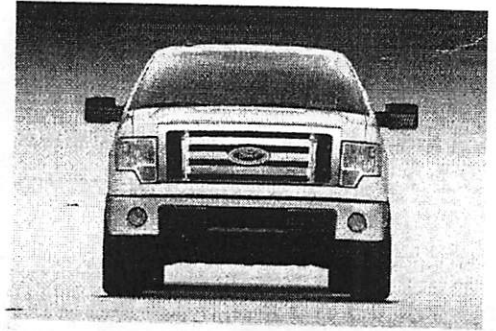
**Step1.** To install your new grille you will need to Remove you grille shell from the vehicle as this will allow you to do the necessary prep work so that your new grille can be installed. The grille shell will need to be removed by removing the 6 nuts at the top portion of the grille shell.



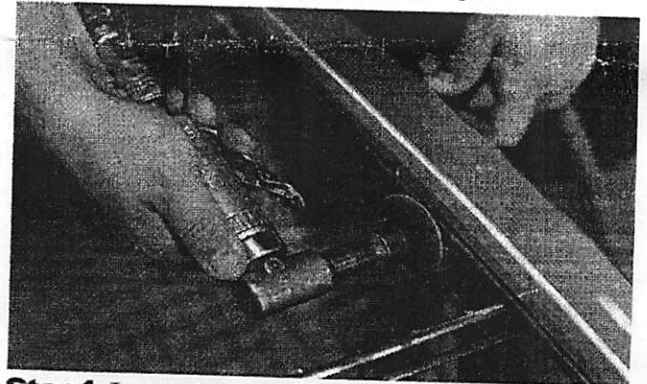
**Step3.** Now that you have completed cutting the center portion of the grille you will now be able to remove the center of the stock grille shell.



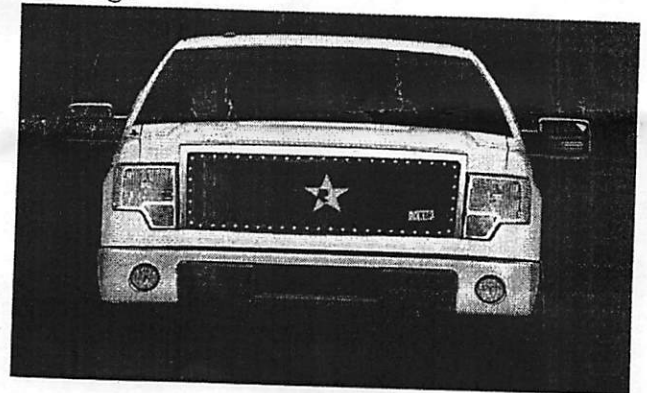
**Step5.** Once you have completed Step 4 you will now be ready to install your new grille place it on top of the stock grille shell and place it centered as you will now begin to tighten all the hardware provided ,this will secure the grille in place.



**Step2.** You will need to cut the center portion of the stock grille to allow the new grille to be installed .To cut the center bars you will need any type of disc cutter or saw. We recommend to mark out a 1/4 inch border with a marker to allow you to see where you will need to cut. You may cut the bars right to the edge of the inner leaving it flush to the edge.



**Step4.** Inspect the inside of the stock grille and remove any rough edges with a disc sander this will provide an even and clean edge.



**Step6.** Now that you have completed step 5 you will be ready to reinstall the grille shell back on to the vehicle using the same hardware that you previously removed. This will conclude you installation.