

I N S T A L L A T I O N M A N U A L

2004 - 2008

FORD

F150

(ALL MODELS EXCEPT HARLEY)

PART NO. RBP-551556

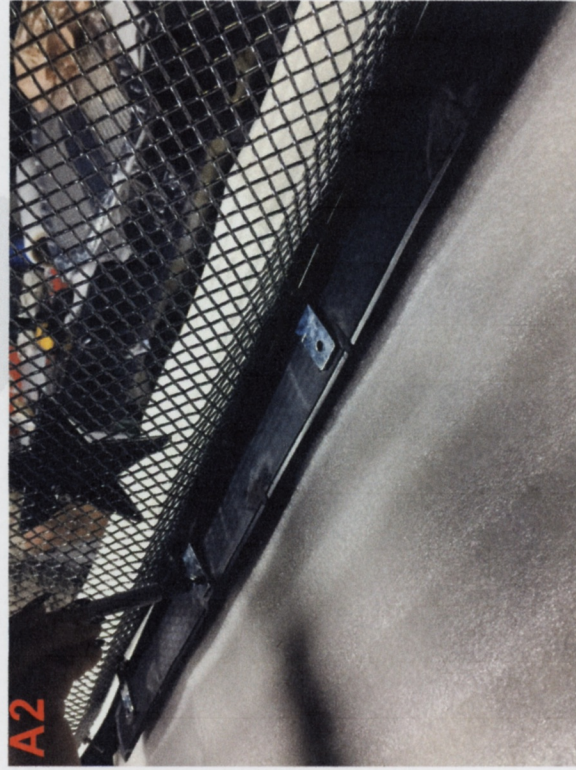


A1



1. Remove OEM Grille from truck, then remove honey comb mesh from the grille.
2. Cut center of Grille out leaving edge border between grille and center. (Cut along red marks as show on picture A1)

3. Place RBP Grille over OEM grille frame and mark installation points using Sharpie pen (Refer to picture A2). Then remove RBP Grille and drill 1/8" holes in installation points on OEM frame (Refer to picture A3)



4. Finally, replace RBP Grille on OEM frame and make sure Grille is neatly centered from the front. Use screws supplied to fasten RBP Grille to OEM frame to complete installation.