



## 09-14 F150 Raptor Style Fender Flares

(Does Not fit Raptor Truck)

### KIT INCLUDES

2 ea. Front Flares	8 ea. Short speed clips
2 ea. Rear Flares	6 ea. L Mounting brackets
2 ea. LED marker lights	1 ea. Wiring harness
27 ft. Rubber Edge Trim	10 ea. #8 x 1/2" mounting screw
10 ea. Long speed clips	10 ea. #8 x 3/4" mounting screws

### TOOLS NEEDED FOR INSTALLATION

Ratchet	1/8" drill bit
5.5 mm socket	#2 Phillips head bit
Phillips head screw driver	Masking Tape

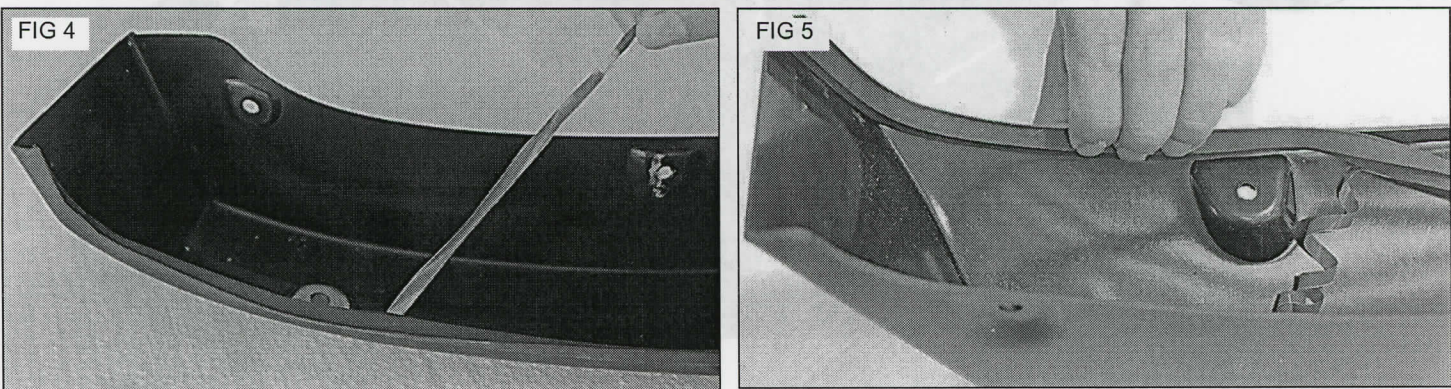
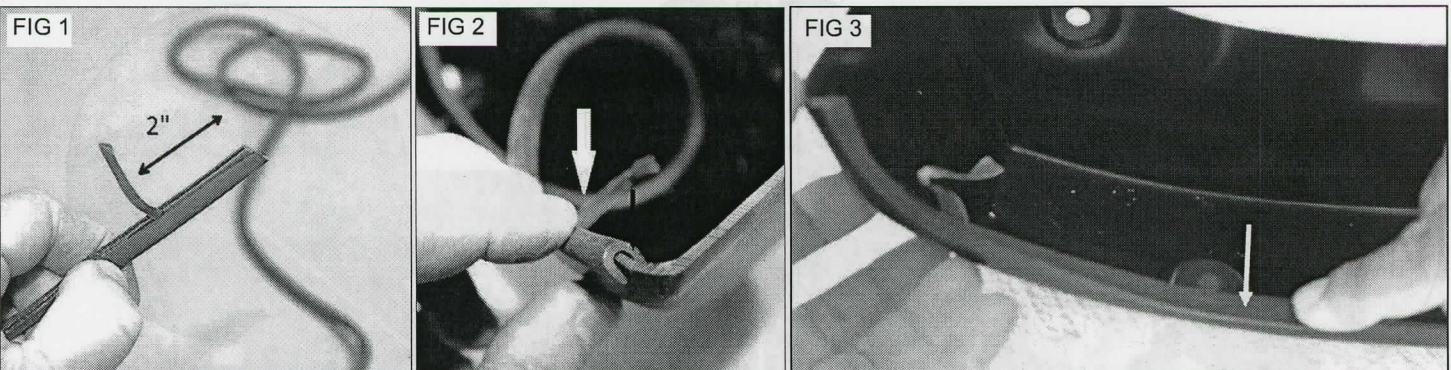
### PRIOR TO INSTALLATION

- Read these instructions Before beginning the installation
- Make sure kit is complete before beginning installation
- **NOTE:** The rear flares are embossed with either a D or P indicating Passenger or Driver. Make sure you match the correct flare to the side of the Truck you are installing.
- If you plan on painting your Fender Flares it must be done prior to installation. All surfaces must be cleaned and prepped following the specifications outlined by the paint manufacturer. PLEASE NOTE: Painted flares cannot be returned.

### PREPARE FLARES

#### STEP 1. Install Rubber Trim On New Flares

- Locate the supplied "U" shaped rubber trim. Peel back approx. 2 "of the red lining. FIG 1
- Starting at one end of the flare, push the trim onto the edge of flare. Make sure the red liner sits inside the flare FIG 2
- Continue pressing the rubber trim on to the flare in 6" increments. FIG 3
- Peel back 6 inches of the red liner and firmly press the trim to bond to the flare. FIG 4 and 5
- Repeat steps 3 and 4 until you have gone completely around the flare. Once you master the technique it will proceed quickly.
- Repeat this process for the remaining flares.

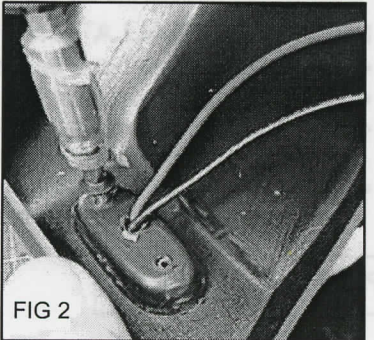
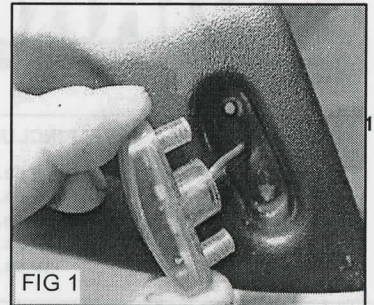




## INSTALLING LED LIGHTS ON FRONT FLARES

- Take the front driver and passenger side flares to the work bench. Note: Make sure the bench is properly padded to ensure the flares do not get damaged during installation process.
  - Locate the supplied LED lights. Place the light into the formed pocket at the front of the flare. Thread the hot and neutral wires through the center hole in the flare. Fig.1
  - Turn the flare over. Adjust LED light until the mounting holes on the lights line up with the holes in the flares.
  - Locate the supplied #8 x 1/2" mounting screws. Using a Philips head screwdriver Install 2 screws per light. Fig. 2
- CAUTION: Do Not Over-tighten screws.**
- Repeat steps above for the other flare.

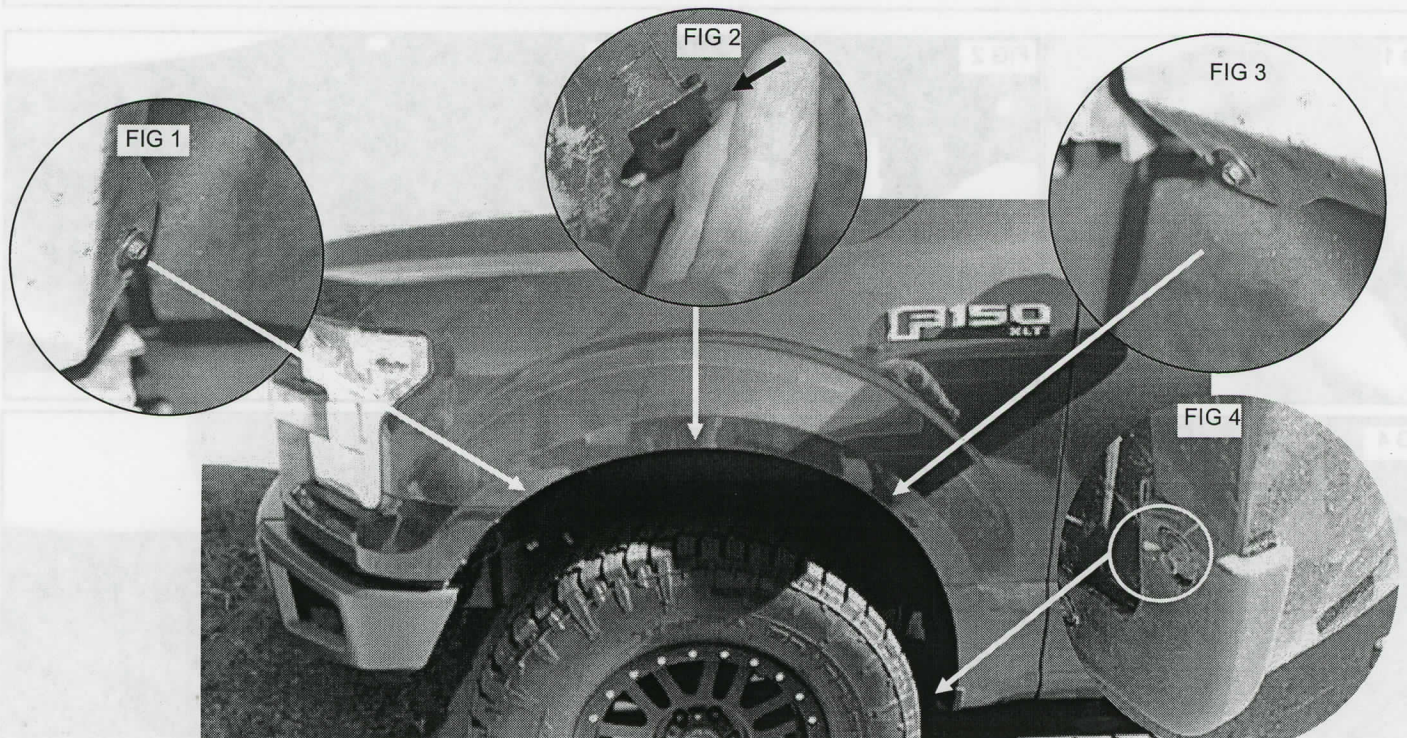
*NOTE: The flares come complete with LED lights which need to be connected to a power source. If you are not qualified to make the proper connections we highly recommend that you contact an installation expert to complete the connections. The hardware kit comes complete with a wiring harness. This harness can be used to connect the LED lights to your power supply. They are included for your convenience but your specific installation may require additional wiring and other components not supplied in our hardware kit.*



## INSTALLING FRONT FLARES

### STEP 1. L Mounting Bracket Installation

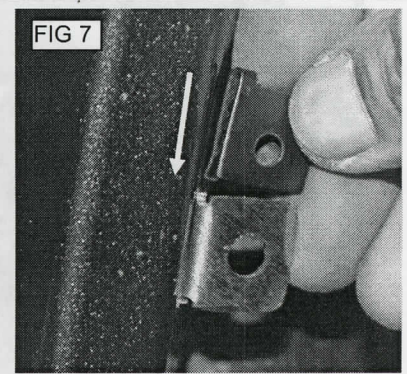
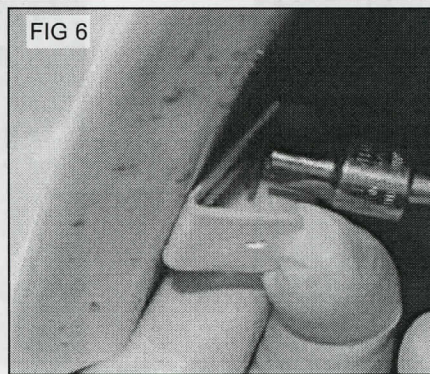
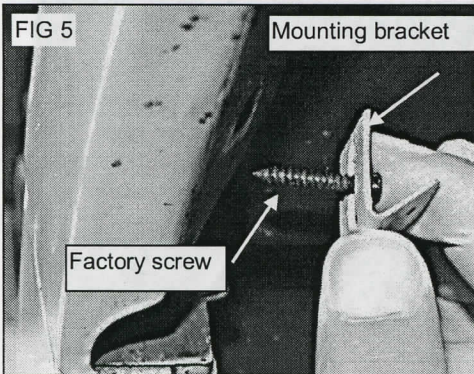
- Locate two factory screws on the inner wall of the wheel well lip. Fig. 1 and 3
- Using a 5.5 mm socket remove and set aside these two screws.
- Locate a supplied speed clip and slide it over the center factory hole Fig. 2
- Remove one factory screw at bottom rear of wheel well. Fig. 4





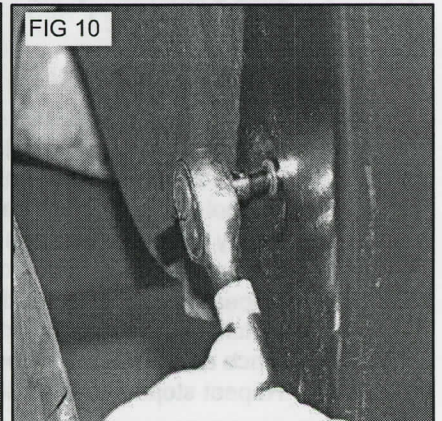
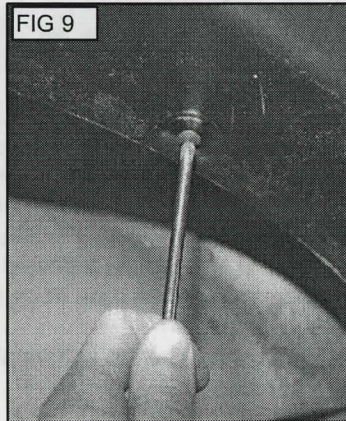
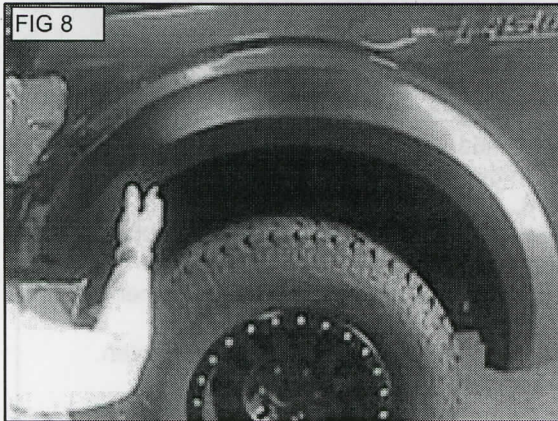
**STEP 2.** Slide a factory screw removed in step one through the slot on a supplied mounting bracket. Fig.5

- Start the screw into the factory holes and using a 5.5 mm socket tighten the screw unit the bracket is securely mounted. Fig.6 (Do Not Over tighten screw)
- Install the other 2 mounting bracket by repeating steps above.
- Once all the brackets are securely installed, locate a supplied short speed clip and press the clip onto the mounting brackets. Center the hole in the clip with the hole in the bracket. Fig.7



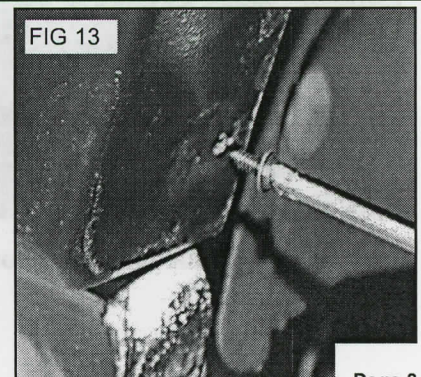
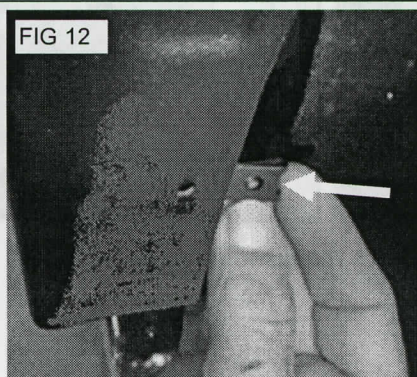
**STEP 3.** Place flare against fender. Align the holes in the flares with the holes in the mounting brackets. Fig 8

- Using a #2 Phillips screw driver proceed to install 3 supplied # 8 x 1/2" mounting screws through the flare and into the speed clips on the mounting brackets. Fig 9
- Using a 5.5 mm socket re-install the factory screw (removed in step one above) Fig 10  
Repeat above steps for the other side of the vehicle..



**STEP 4.** Proceed to the lower front of flare and locate pilot hole in fender flare. Using the hole in the flare as a guide drill a 1/8 inch hole into the factory plastic body. Fig 11 *Tip.* Turn tire to provide tool clearance.

- Slide a speed clip behind flare onto the factory body. Center hole in clip over hole drilled above. Fig 12
- Using a #2 Phillips screw driver install one supplied # 8 x 3/4" mounting screws through the flare and into the speed clip. Fig 13  
Repeat steps above for the other side.





## INSTALLING REAR FLARES

T529122

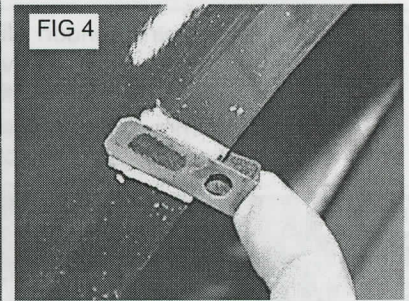
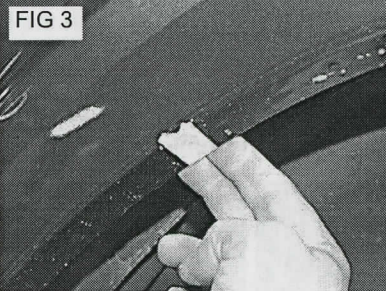
**STEP 1.** Have an assistant place the flare on the fender. Adjust the flare until it fits correctly. Fig 1

- Using the pilot holes in the flare as a guide place a mark on the lip of the wheel well. Fig 2



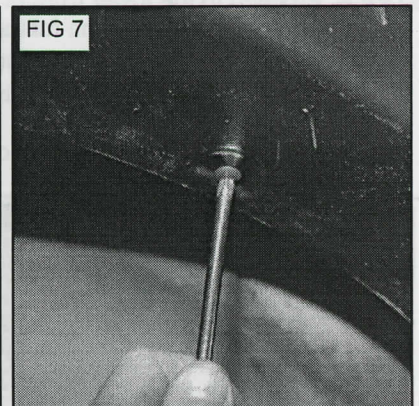
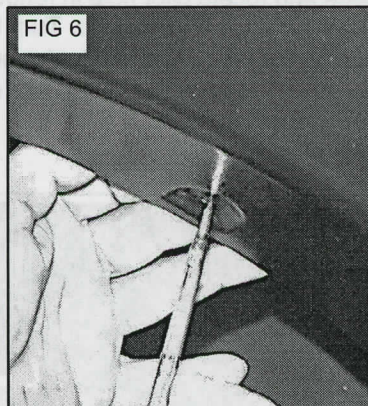
**STEP 2.** Remove the flare.

- Place a piece of masking tape on the wheel well lip over the marks you made in step one above. Fig 3
- Slide a Long speed clip over the taped areas. Fig 4



**STEP 3.** Place flare against vehicle fender. Reach under the wheel well and adjust the speed clip installed in step 2 above until the hole in the flare lines up with the hole in the speed clip. *Tip.* Insert a punch into the hole in the flare to help center the speed clip. Fig 5 and 6

- Firmly push the flare against the fender and install one supplied # 8 x 3/4" mounting screw through the flare and into the speed clip. Do not fully tighten screw at this time. Fig 7
- Repeat this process for the other holes in the flare always putting pressure against the flare when installing the mounting screw.
- Once all screws have been installed proceed to tighten all screws showing care not to over tighten.
- Repeat steps above for the other side.

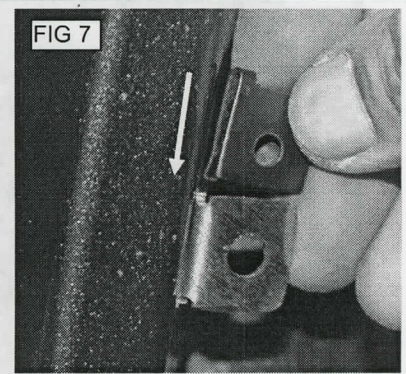
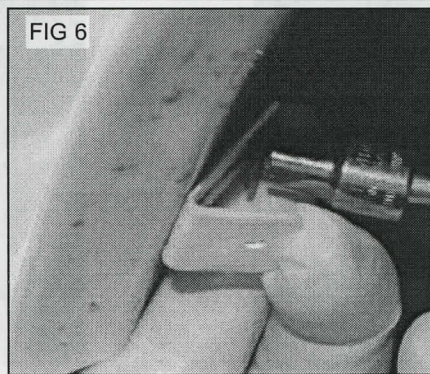
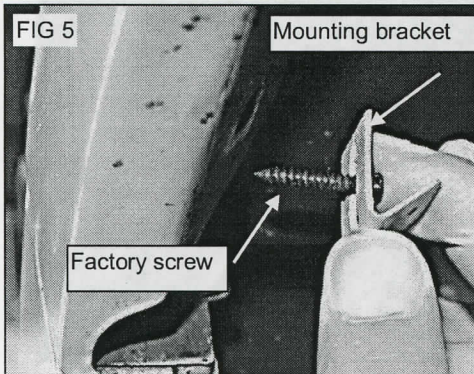


Congratulations. This completes the installation.



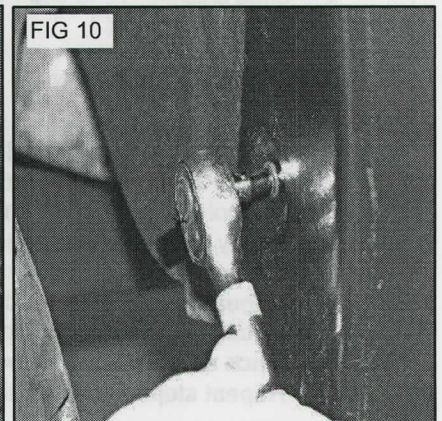
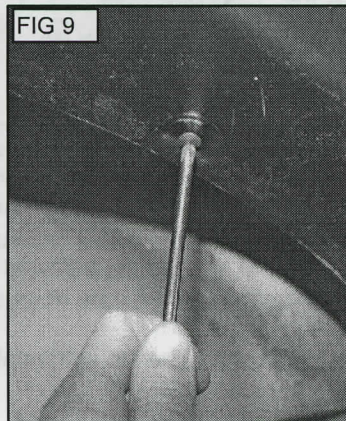
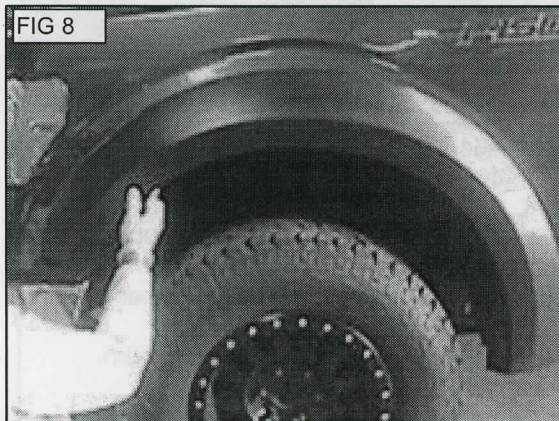
**STEP 2.** Slide a factory screw removed in step one through the slot on a supplied mounting bracket. Fig.5

- Start the screw into the factory holes and using a 5.5 mm socket tighten the screw unit the bracket is securely mounted. Fig.6 (Do Not Over tighten screw)
- Install the other 2 mounting bracket by repeating steps above.
- Once all the brackets are securely installed, locate a supplied short speed clip and press the clip onto the mounting brackets. Center the hole in the clip with the hole in the bracket. Fig.7



**STEP 3.** Place flare against fender. Align the holes in the flares with the holes in the mounting brackets. Fig 8

- Using a #2 Phillips screw driver proceed to install 3 supplied # 8 x 1/2" mounting screws through the flare and into the speed clips on the mounting brackets. Fig 9
- Using a 5.5 mm socket re-install the factory screw (removed in step one above) Fig 10  
Repeat above steps for the other side of the vehicle..



**STEP 4.** Proceed to the lower front of flare and locate pilot hole in fender flare. Using the hole in the flare as a guide drill a 1/8 inch hole into the factory plastic body. Fig 11 *Tip.* Turn tire to provide tool clearance.

- Slide a speed clip behind flare onto the factory body. Center hole in clip over hole drilled above. Fig 12
- Using a #2 Phillips screw driver install one supplied # 8 x 3/4" mounting screws through the flare and into the speed clip. Fig 13  
Repeat steps above for the other side.

