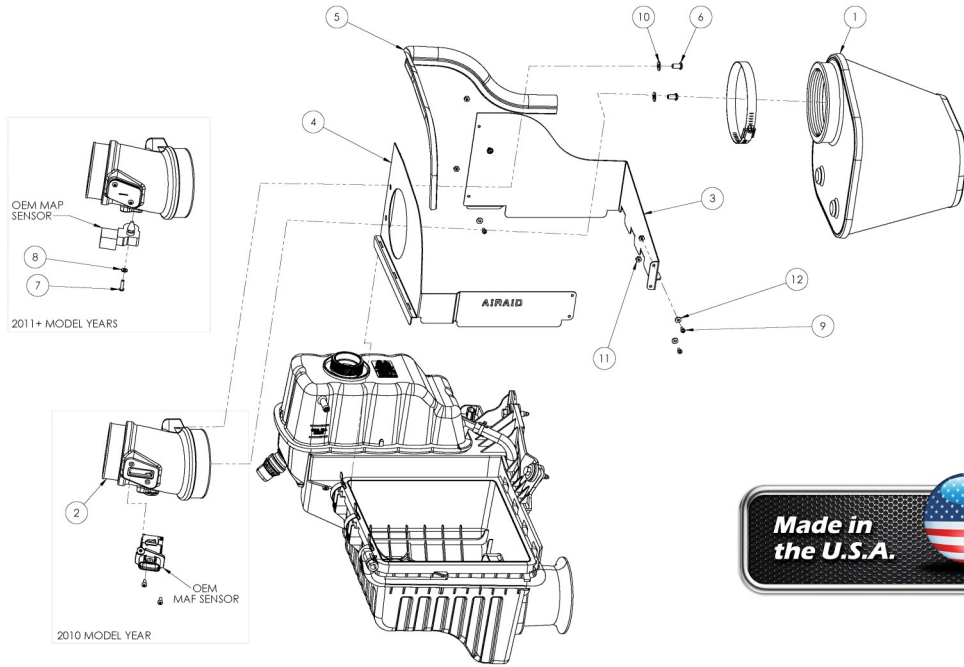




INTAKE SYSTEMS



Installation Instructions
Part Number 401-239-1
2011-12 Ford F-150
3.7L and 5.0L Motors
2011-12 3.5L EcoBoost V6

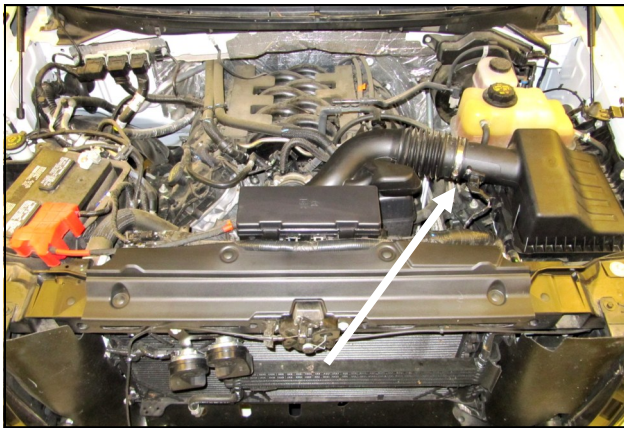
Packing List:

#1	721-478	Airaid Premium Filter	1
#2	KIT239TA	Air Meter Tube	1
#3	KIT299RPC	Rear Panel	1
#4	KIT299FPC	Front Panel	1
#5	KITWSTRIP02	Weather Strip 22"	1
	KIT2391HPS	Hardware & Instructions	1
#6	KIT15DHC3050	1/4-20 x 1/2" Button Head Bolt	2
#7	KIT15BHC3063	#8-32 x 5/8" Button Head Screw	1
#8	KIT15FW3016	#8 Washer	1
#9	KIT6C31MXPPZ	6-32 x 5/16" Pan Head Screw	4
#10	KIT09FWZ019	1/4" Flat Washer	2
#11	KIT6CNKEPZ	#6 Kep Nut	4
#12	KIT6NWSAPZ	#6 Flat Washer	4
#13	KITBIT01	T-20 Torx Bit	1

Tools Required For Installation:

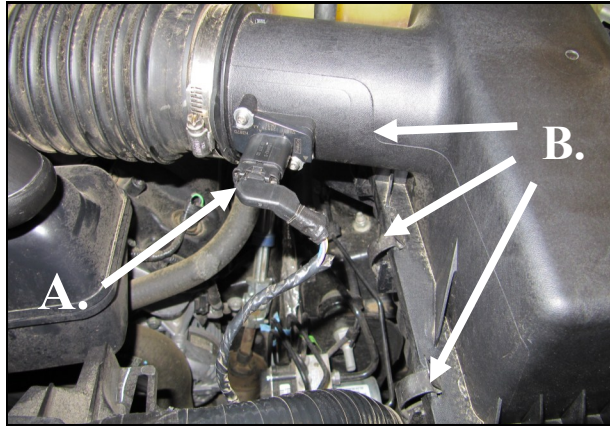
5/32", 9/32" Allen Wrench
 5/16" Socket
 Ratchet & Extension, and
 Standard and Phillips Head Screwdrivers

NOTE: These instructions depict an installation being performed on a 5.0L F-150 and is meant to be a guide for all other makes and models listed. While some details may vary from vehicle to vehicle, the general install procedure



Disconnect The Negative Battery Terminal!

1. Loosen the hose clamp on the airbox side of the factory air intake tube.



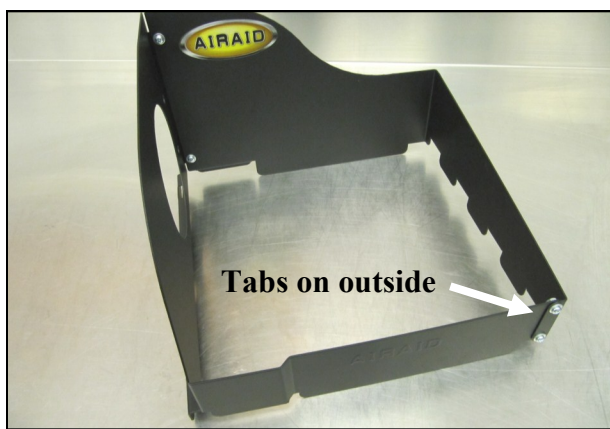
2. **A.** Disconnect the Air meter in the factory airbox top.
B. Unfasten the Three clips on the left side of the airbox.



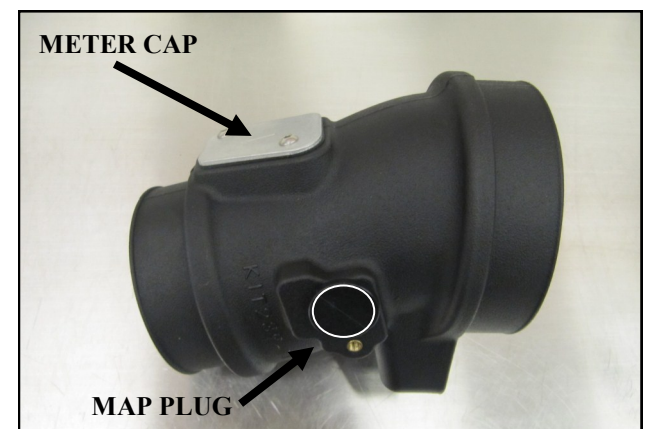
3. Slide the factory intake away from the airbox. Lift up and slide the airbox tabs out of the slots in the lower half and set aside.



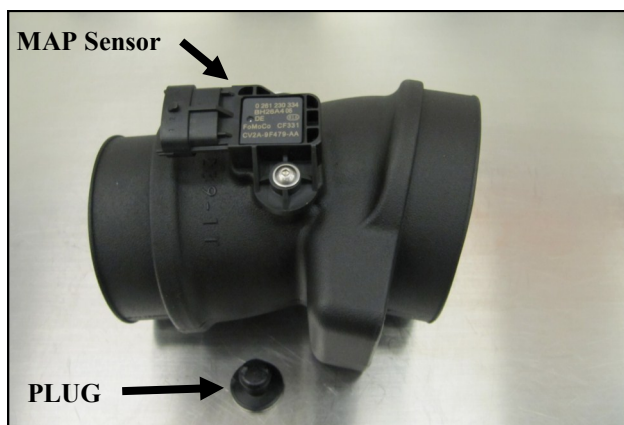
4. Remove the Factory air filter.



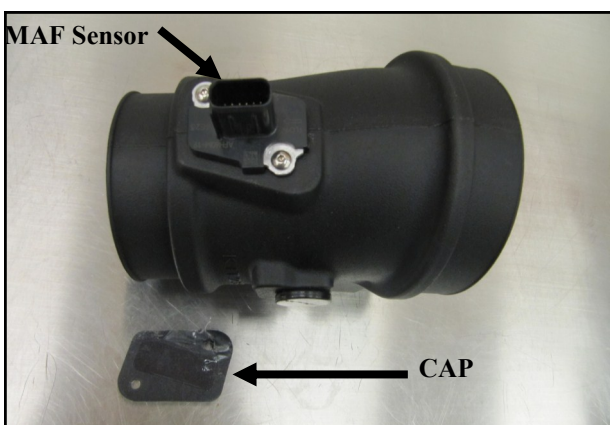
5. Assemble the Front and Rear Panels (#3 & #4) as shown with the tabs on the outside of the assembly. Use the four 6-32 Button Head Screws (#9), #6 Flat Washers (#12), and #6 Kep Nuts (#11) to secure the assembly.



6. Depending on the sensor configuration of your factory intake system, you will use one of the two sensor receptacles in the Airaid intake tube. There is a Mass Airflow sensor receptacle on the tube and a MAP sensor receptacle on the tube. Both ports are capped and plugged from the factory.



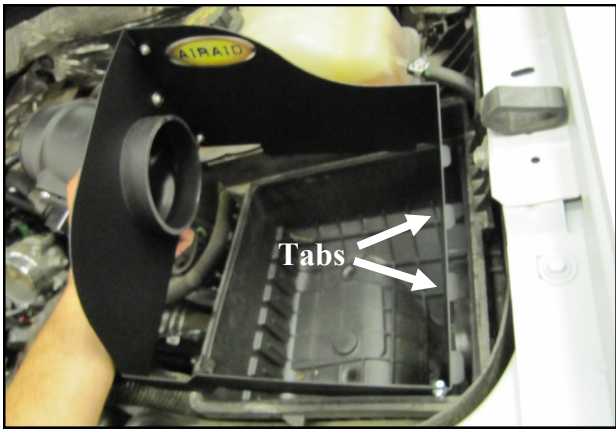
7. If your vehicles intake utilizes a MAP sensor, Remove the MAP Plug and transfer the MAP sensor into the Airaid intake tube as shown. Secure the sensor using the long 8-32 Button Head Screw (#9) and the #8 Washer (#8). Discard the Plug.



8. If your vehicles intake utilizes a Mass Airflow, or MAP sensor, Remove the Meter Cap and Gasket and transfer the sensor into the Airaid intake tube as shown. Secure the sensor by reusing the Caps Two 8-32 Button Head Screws. Discard the Cap and Gasket.



9. Install the Air Meter Tube (#2) into the Panel Assembly and secure using the two 1/4-20 Button Head Screws (#6), and 1/4" Flat Washers (#10).



10. Install the Airaid intake assembly onto the factory airbox bottom. Insert the Panel tabs into the slots first, then lower the tube side down and fasten the three clips.



11. Slide the factory intake tube onto the Airaid Tube and tighten the clamp. Reconnect the Mass Air Flow sensor.



12. Install the Weather Strip (#5) to the Panel assembly as shown, with the contour rolling away from the filter area.



13. Install the Airaid Premium Filter (#1) on to the Air Meter Tube and tighten the clamp.

18. Double check your work!

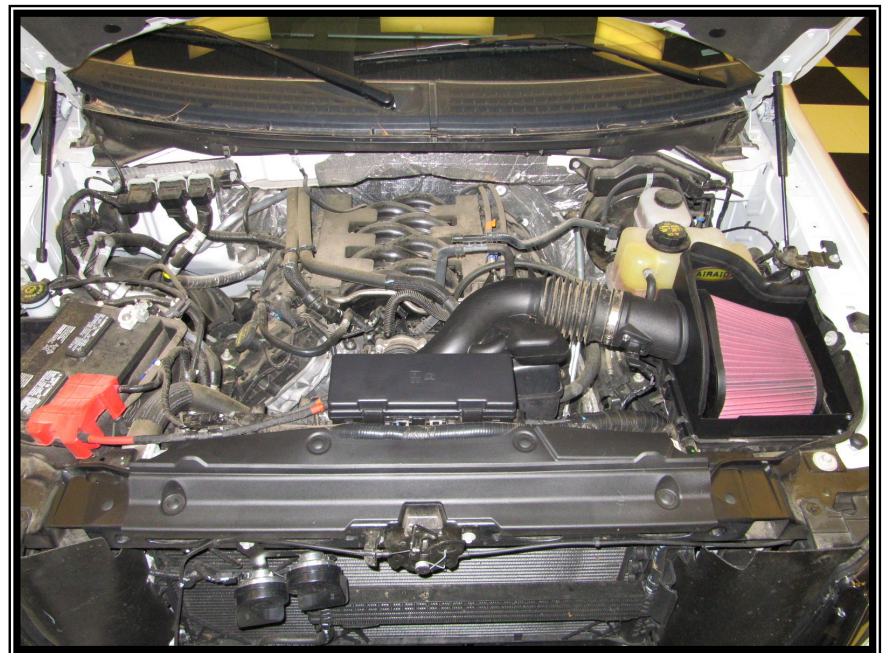
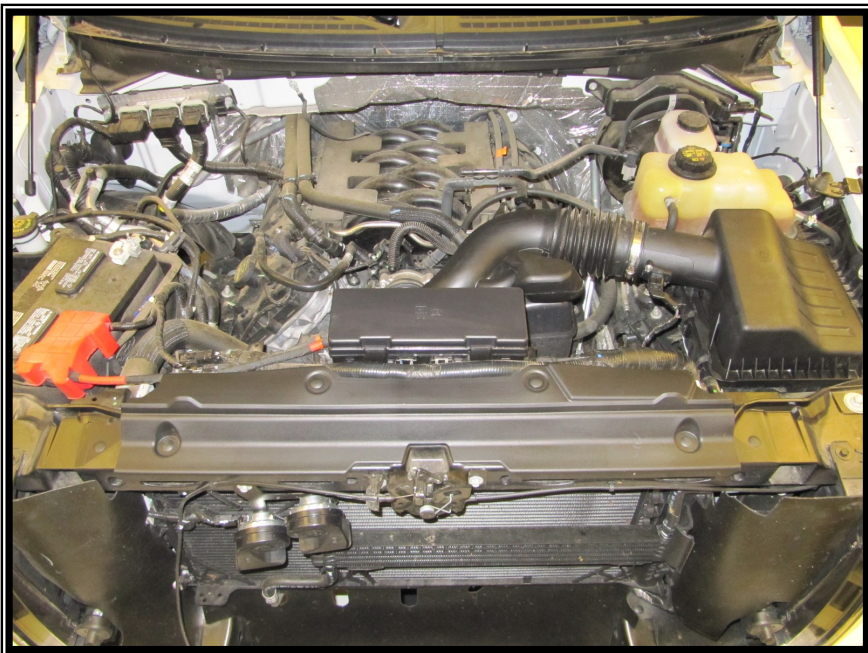
Make sure there is no foreign material in the intake path. Make sure all clamps, hoses, bolts, and screws are tight. Double check the hood clearance!

Reconnect the negative battery cable!

Thank you for purchasing the Airaid Intake System. Contact Airaid @ (800) 498-6951 8:00 AM - 5:00 PM MST weekdays for questions regarding fit or instructions that are not clear to you. Your Airaid Intake System was carefully inspected and packaged. Check that no parts are missing, or were damaged during shipping. If any parts are missing, contact Airaid. The air filter element is protected from direct exposure to water and debris; care should be taken not to drive through deep water. WATER INGESTION IS THE DRIVERS RESPONSIBILITY! The air filter is reusable and should be cleaned periodically.

Before!

After!



SynthaMax

Do Not Oil

Synthamax Air Filters do not require oil. Service air filter as needed by cleaning with common non-petroleum all-purpose household cleaner and water. Simple Green®, Formula 409® or equivalent works great. Apply cleaner to outside of air filter and allow to soak. Then flush filter clean from the inside out with a garden hose and repeat steps if necessary. Do not apply high pressure water or air to clean filter. Allow filter to air dry and reinstall.



Instructions Revision
Date: 4/26/12