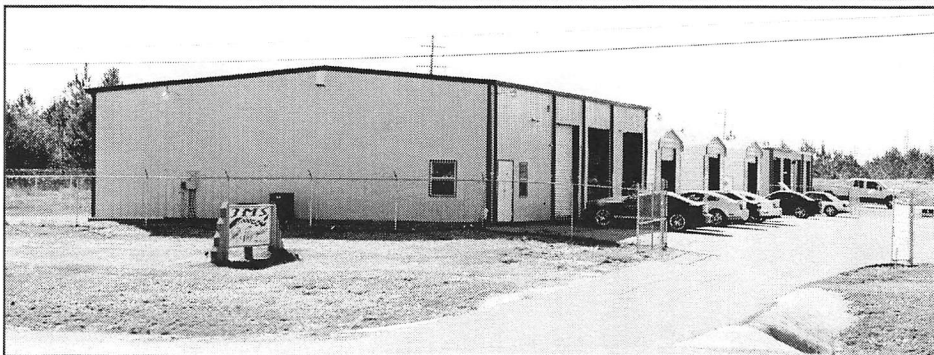


ABOUT JMS CHIP & PERFORMANCE

For more than 20 years, JMS Chip & Performance has been an industry leader in late model domestic and import vehicle tuning. JMS brand electronics components are some of the most technologically advanced in the automotive industry and feature

innovative high quality engineering, materials and workmanship. The JMS technical center in Lucedale, MS is one of North America's premier automotive and motorcycle tuning, manufacturing, and turn key automobile development facilities, producing numerous custom high performance vehicles each year. JMS is also a pioneer in domestic vehicle calibrations and highly regarded as a foremost expert in Ford, GM and Chrysler powertrain and drivetrain systems.

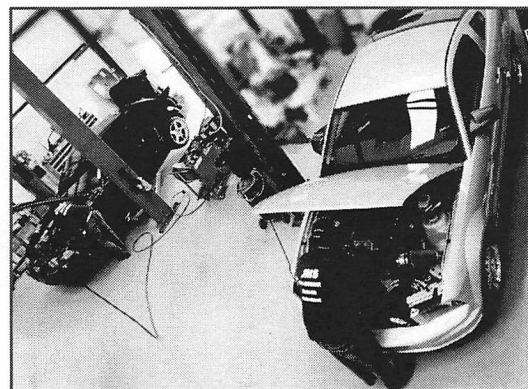


JMS TECHNICAL CENTER • LUCEDALE, MS

A state of the art facility that integrates custom and specialty vehicle manufacturing, race car production, electronics development and manufacturing, custom tuning and vehicle calibrations engineering, prototype development, and after-market component sales and distribution.

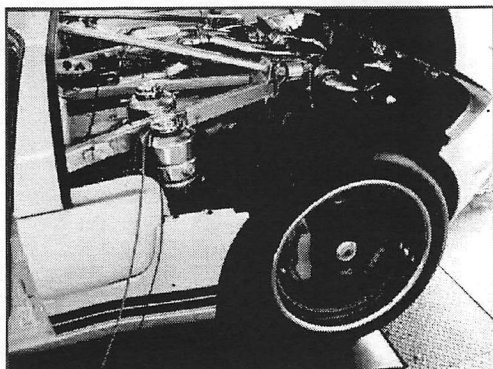
LIGHT VEHICLE ASSEMBLY

JMS produces countless custom or specialty vehicles ranging from contemporary late model domestic performance cars to full blown turn key race cars, each year. Our teams of professionals are experts in supercharging, turbocharging, engine assembly, chassis production, suspension upgrades, and specialty equipment integration.



CUSTOM ECU CALIBRATION ENGINEERING

Since 1993, JMS has been a pioneer and industry-leader in Ford vehicle calibrations and instrumental in helping to develop the modern custom tuning aftermarket. Our tech center's tuning facility features two chassis dynamometers specifically for car and truck calibrations and engineering, and one motorcycle dyno to service the growing powersports market.



JMS POLICIES

HOW TO ORDER

Retail orders for JMS products can be placed through our website at: www.jmschip.com or by calling us factory direct at (601) 766-9424. JMS products can also be purchased through our network of warehouse distributors, dealers, jobbers, and installers. To locate a wholesaler or installer in your area, please contact us or use the dealer locator on our website.

TERMS OF SALE

JMS product orders are subject to our wholesale trade terms and conditions, which are located in the applicable price guide.

SHIPPING AND HANDLING

JMS products are shipped F.O.B. Lucedale, MS via UPS or common freight carrier, and are subject to applicable shipping terms and charges. JMS does maintain a freight policy for warehouse distribution based on a minimum order qualification. Overseas order shipping via a common freight forwarding company or broker are the responsibility of the customer.

PRICING

JMS maintains a *minimum advertised pricing policy* to protect product value, and maintain consistent and fair distribution or retail pricing points. JMS places high value on its brand and product integrity.

NON-JMS BRAND PARTS

Aftermarket parts purchased from JMS are covered under the manufacturer's warranty, and are not covered under the JMS manufactured products warranty.

OFF-ROAD NOTICE AND TERMS & CONDITIONS

JMS products are designed for Off-Road or Racing use only. JMS terms and conditions including: Pricing, specifications, warranty, and availability are subject to change without notice. Compliance with all federal, government, provincial, state or local laws are the responsibility of the customer or end-user. All claims of product performance are based on controlled testing conditions and real-time data, and results may vary based on your application or use. JMS shall not be liable for any fines or violations resulting from product use or installation.

SERVICE OR REPAIR:

Please contact JMS @ 601-766-9424 for a Return Authorization. All service returns should be sent freight pre-paid to: JMS SERVICE, 3247 HWY 63 S, Lucedale, MS 39452. The Return Authorization Number should be clearly written on the outside of the box, and in a letter that is included in the box. The letter should also list your contact phone number and a clear explanation of the exact problem.

JMS WARRANTY & CONTACT INFORMATION

JMS WARRANTS TO THE ORIGINAL PURCHASER THE FOLLOWING:

Your JMS Product will be free from defects in materials and workmanship for a period of twelve months from the original purchase date. The warranty only covers the product itself and not the cost of removal and re-installation of the product. JMS may extend the limited warranty on a case by case basis, based on the circumstances of the warranty claim. JMS products are designed exclusively for use in racing applications. JMS products that are not installed according to the supplied instructions, may not be covered by warranty.

SPECIFIC CONDITIONS THAT WILL VOID THE PRODUCT WARRANTY:

If the product case has been opened or the product has been modified or repaired.
If the product was not installed or used correctly.
If the product has been tampered with by: negligence, misuse or accident.
If the product is returned without explanation of the problem or Return Authorization.

CONTACT JMS @ 601-766-9424 FOR A RETURN AUTHORIZATION NUMBER:

All warranty returns should be returned freight pre-paid and should include inside of the box: Proof of Purchase and a Letter that contains both the Return Authorization Number and a Clear Explanation of the EXACT problem. The Return Authorization Number should also be clearly written on the outside of the box.

SEND ALL RETURNS TO:

JMS Returns, 3247 HWY 63 S, Lucedale, MS 39452

JMS Chip & Performance LLC is not liable for any and all consequential damages arising from the breach of any implied or written warranty in regards to the sale of this product, in excess of the purchase price.

TECHNICAL SUPPORT & CONTACT INFORMATION:

JMS 3247 Hwy 63 S, Lucedale, MS 39452

601-766-9424

Technical Support Hours: Monday - Friday 9:00am - 5:00pm (Central Standard Time)

CONFIGURATION AND INSTALLATION VIDEOS ARE AVAILABLE ONLINE: WWW.YOUTUBE.COM/JMSCHIP

If you have any questions, please contact JMS technical support via email: jms@jmschip.com

Follow JMS on FaceBook: WWW.FACEBOOK.COM/JMSCHIPS

JMS on YouTube: WWW.YOUTUBE.COM/JMSCHIP

JMS Website: WWW.JMSCHIP.COM

JMS on Instagram: @jmschip

