



## Installation Instructions

### Delta Boost Module

Fits: 2015-2017 Ford 2.7L EcoBoost engines

Includes F-150

Catalog # 18103

**Congratulations for being selective enough to use Flowmaster Delta Boost Performance Tuner. We have spent many hours developing this kit to assure that you will receive maximum performance and durability with minimum difficulty in installation. Please take the time to read these instructions and call us if you have any difficulties during the installation.**

**CAUTION:** Make sure ignition is OFF and cooled down before attempting installation.

This Flowmaster Delta boost Tuner is intended for all Ford vehicle models equipped with 2.7L Ecoboost engine. The instructions below show an F-150 installation however other models follow the same basic procedure. Installation of this unit can be accomplished in a matter of minutes by anyone with minimal mechanical experience.

#### REQUIRED TOOLS



Drive

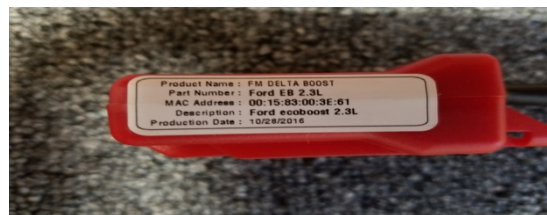


Extension

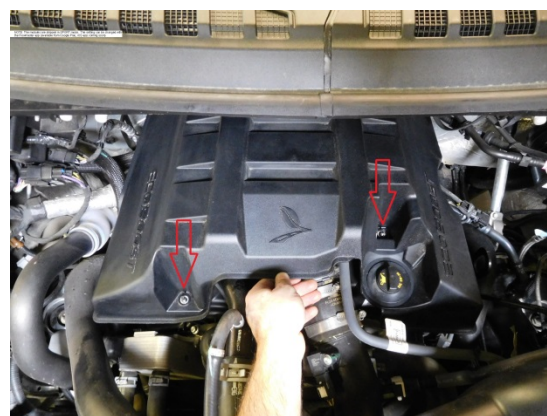


Socket (10mm)

1. The Delta Boost module is identified with a MAC address which is located on the sticker on the side of the unit. Please note this address. It will be needed by the smart phone app to establish a connection.



2. Remove the top engine cover. There are two 10mm hex nuts that need to be removed before lifting the cover off the engine.



3. The pressure sensor is located in location shown. It will have a connector that is identical the ones on the module. Disconnect the wiring harness from the pressure sensor.



4. Disconnect the wiring harness from the pressure sensor.



5. Connect the male connector on the Delta Boost module into the factory sensor. Connect the female connector on the Delta Boost module with the connector on the factory harness. Place the Delta boost module off to the right side as shown in the photo.



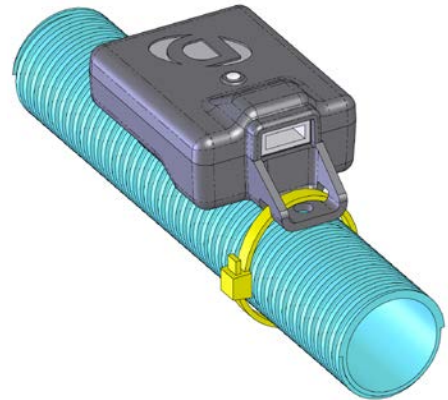
6. Place the factory engine cover back in place and re secure with original hex nuts.



7. Secure the module in place using the supplied plastic tie as shown in photo. Please see note below.



8. The module is to be secured using the included zip-tie. Please note -- DO NOT route the zip-tie over the harness at the module, as this could stress the internal circuit board and damage the module! Only insert a zip-tie thru the slots on the module as shown



9. Turn on the ignition, but do not start the engine. The LED on the module will illuminate.

10. The module has 4 settings -- in order of increasing performance, they are: VALET (-4 psi), STANDARD (+0 psi), SPORT (+3 psi), and MAX (+4 psi).

NOTE: Flowmaster recommends the use of 91 octane or higher fuel for use in MAX setting.

11. Connect to your Android phone or tablet to your module using the app. Note that your device must be equipped with Bluetooth version 4.0.

12. Adjust module for the desired level of performance. Your setting will be retained, so adjustment is not necessary at each engine start.

NOTE: The modules are shipped in SPORT mode. The setting can be changed with the Flowmaster app (available from Google Play; iOS app coming soon).

Android Users: Click <https://play.google.com/store/apps> to download the Flowmaster Delta boost app from the Google Play store. You can also search "Flowmaster" on the Google Play store to locate the app.

iOS users: Access the Apple App store and search for the Flowmaster Delta Boost app.

**IMPORTANT: RETAIN THESE INSTRUCTIONS FOR FUTURE REFERENCE**

**Technical Service**

A highly trained technical service department is maintained by Flowmaster to answer your technical questions, provide additional product information and offer various recommendations.

Technical service calls, correspondence, and warranty questions should be directed to:



**Flowmaster, Inc**

(707) 544-4761

[www.flowmastermufflers.com](http://www.flowmastermufflers.com)