

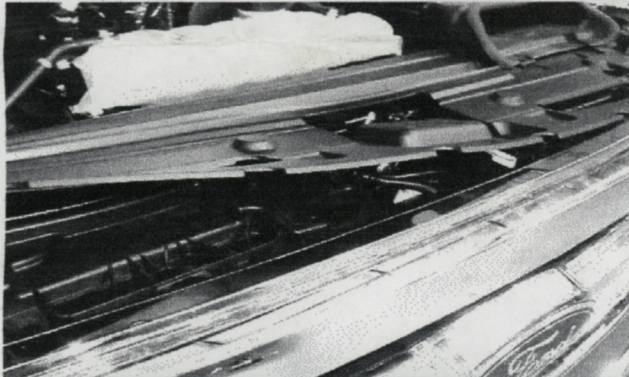


# RIBP™

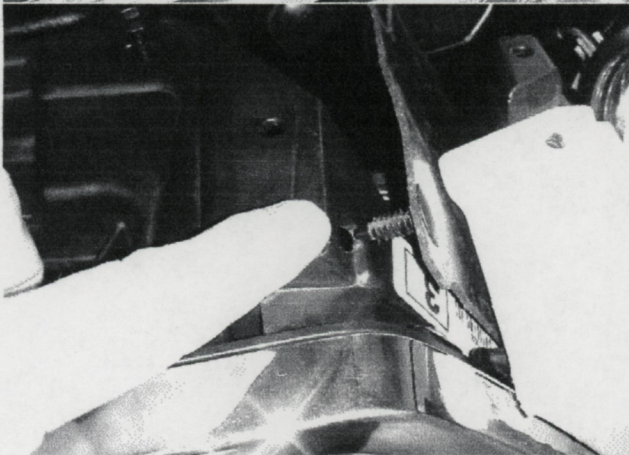
ROLLING BIG POWER

2015 FORD

PART #258577-C

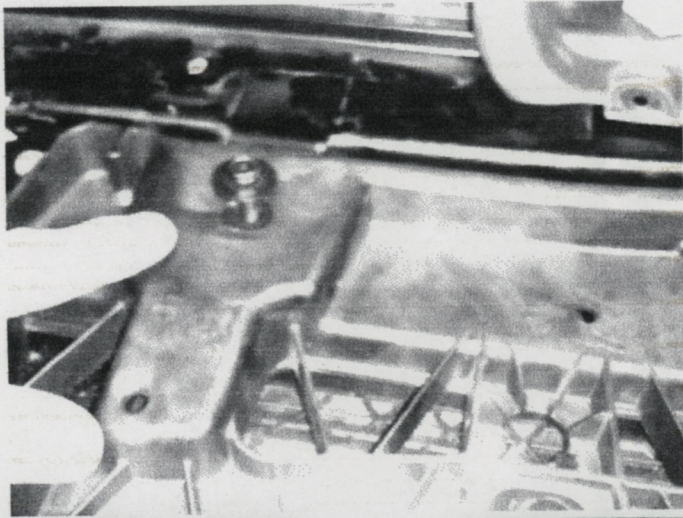


STEP 1. USING BLUE PAINTERS TAPE COVER THE GRILLE FRAME. THEN REMOVE RADIATOR COVER ABOVE GRILLE HELD BY PUSH ON TABS.



STEP 2- REMOVE SIDE PLASTIC PUSH ON TABS THAT HOLD PLASTIC GUARD TO GRILL

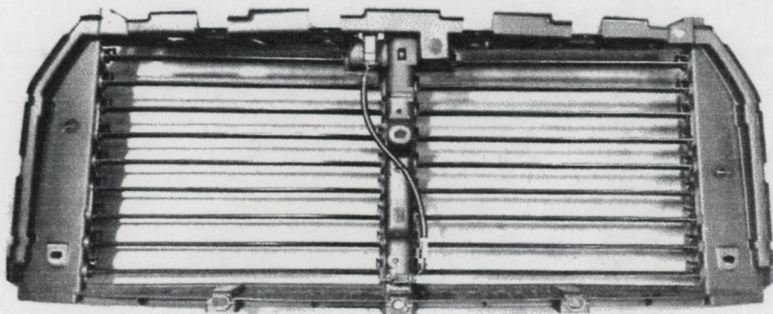




**STEP 3. REMOVE THE FOUR 10MM SCREWS THAT HOLD THE GRILL TO THE RADIATOR SUPPORT.**

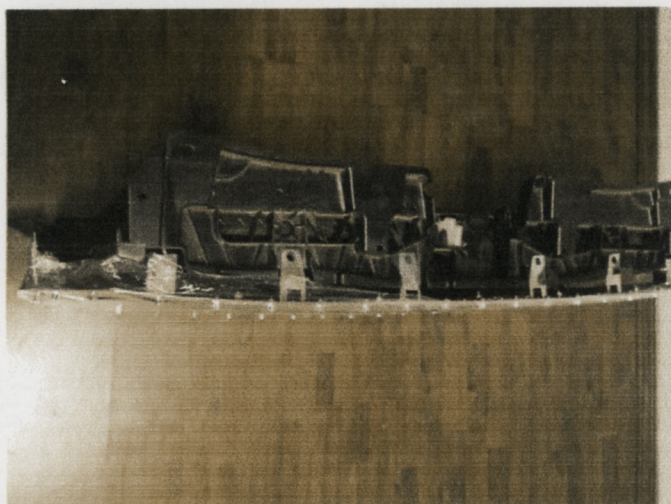


**STEP 4. VERRY CAREFULLY REMOVE HEADLIGHT MOLDINGS BY PULLING BACK GENTLY AND THEN REMOVE THE 10MM SCREWS LOCATED UNDER.**



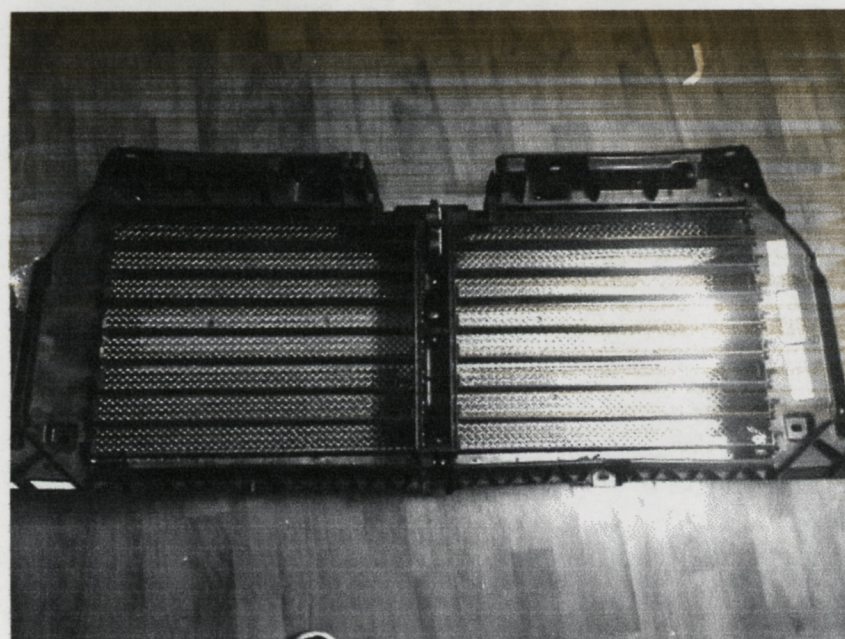
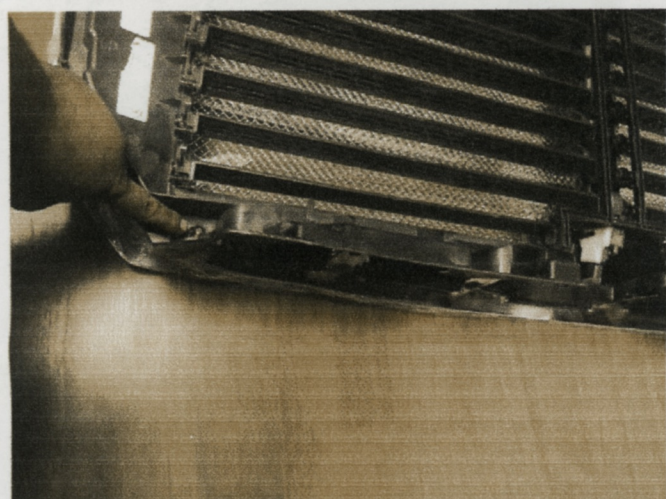
**STEP 5. AFTER REMOVAL OF THE GRILL, SEPARATE THE AIR DUCT FROM THE GRILL.**



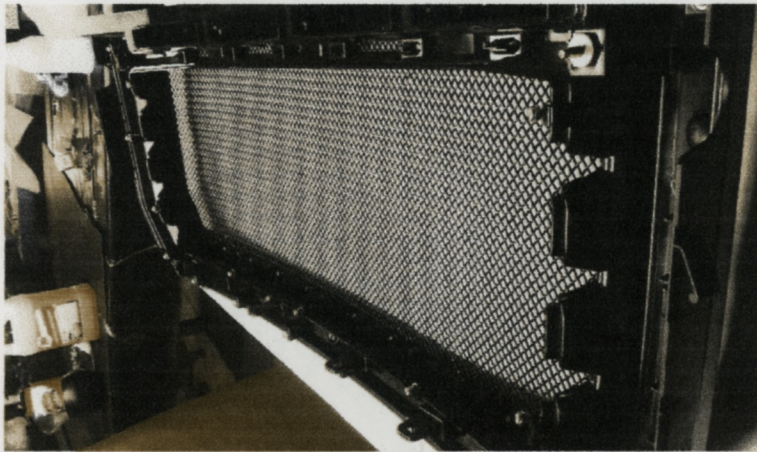


**STEP 6. REMOVE HARDWARE FROM RBP GRILLE THEN PLACE RBP GRILLE OVER RADIATOR SHROUD.**

- A) FIRST SECURE THE TWO TOP CORNERS PLACING WASHERS AND NUTS.
- B) RELOCATE PUSH ON TABS ON TOP PART.
- C) SECURE SIDE AND BOTTOM PARTS USING HARDWARE SUPPLIED.







**STEP 7. REINSTALL RADIATOR SHROUD WITH RBP GRILLE ONTO TRUCK AND ALIGN, FINALLY TIGHTEN TOP NUTS AND REINSTALL ALL OTHER NECESSARY PARTS TO FINISH INSTALLATION.**

**IF YOU HAVE ANY ISSUES OR QUESTIONS REGARDING INSTALLATION, PLEASE CONTACT CUSTOMER SERVICE.**

**CUSTOMER SERVICE 1-800-237-7560**

